



## LG01 LoRa Gateway User Manual

---

Document Version: 1.0

Firmware Version: IoT Mesh v3.4.0

Version	Description	Date
0.1	Initiate	2016-Oct-29
1.0	Release, Add ThingSpeak Examples	2016-Dec-9
1.1	Add Example List for connecting to TTN	2017-May-17

**Index:**

1	Introduction .....	4
1.1	Overview.....	4
1.2	What is LG01.....	4
1.3	Specifications.....	4
1.4	Features .....	7
1.5	System Structure .....	7
1.6	Applications .....	8
1.7	Hardware Variants .....	9
1.8	Install SIM card in EC20/UC20 3G/4G module .....	9
2	Quick Start Guide .....	10
2.1	Access and config LG01 .....	10
2.2	Program microcontroller.....	11
2.2.1	Download and configure Arduino IDE.....	11
2.2.2	Upload a sketch in the MCU.....	13
2.3	Simple LoRa wireless example.....	15
2.3.1	Installing LoRa Library .....	15
2.3.2	Upload LoRa Server Sketch .....	16
2.3.3	Upload LoRa Client Sketch .....	16
3	Typical Network Setup .....	17
3.1	Overview.....	17
3.2	General WiFi AP Network.....	18
3.3	WAN Port Internet Mode .....	19
3.4	WiFi Client Mode .....	19
3.5	Mesh WiFi Network.....	20
3.5.1	Mesh Gateway Set Up.....	20
3.5.2	Mesh Client Set Up.....	22
3.6	USB Dial Up Modem Set Up .....	24
3.7	USB 3G/4G Ethernet Dongle .....	25
4	Linux System.....	27
4.1	SSH Access for Linux console .....	27
4.2	Edit and Transfer files .....	28
4.3	File System.....	28
4.4	Package maintain system.....	29
5	Bridge Library .....	30
6	Advance Management .....	31
6.1	Reset Network or Reset to Factory Default .....	31
7	Upgrade Firmware .....	32
7.1	Upgrade via Web UI.....	32

---

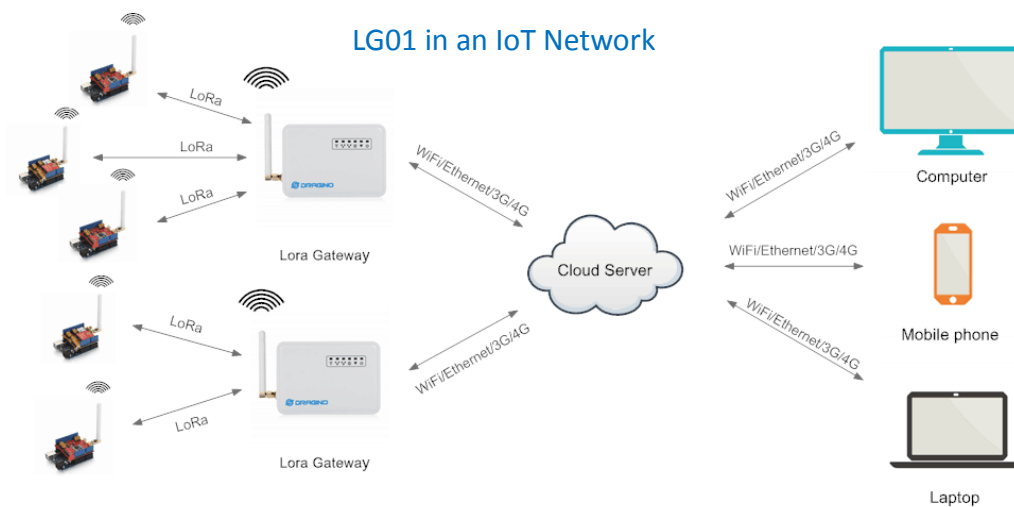
7.2	Upgrade via Linux console.....	32
8	Auto-Update.....	33
8.1	Auto update MCU.....	33
9	Advance Examples .....	34
9.1	Upstream: Get data from LoRa node and send to IoT server .....	34
9.1.1	Set up hardware .....	34
9.1.2	Set up IoT Server account .....	35
9.1.3	Upload sketches .....	35
9.1.4	Check Result.....	35
9.2	Downstream: Get data from IoT Server and send to LoRa node .....	37
9.2.1	Set up Hardware .....	37
9.2.2	Set up talkback command.....	37
9.2.3	Upload sketches .....	38
9.2.4	Check Result.....	38
9.3	Example for Connecting to TTN LoRaWAN server.....	39
9.4	Multiple Nodes examples .....	39
9.5	How to use the sensor pin of LG01-S? .....	40
9.6	More Examples.....	42
10	FAQ.....	43
10.1	Why there is 433/868/915 version LoRa part?.....	43
10.2	What is the frequency range of LG01 LoRa part? .....	43
10.3	What kind of LoRa devices can the gateway support? .....	43
10.4	How many nodes can the LG01 support? .....	43
10.5	What kind of Server the LG01 can support?.....	43
10.6	Can I make my own firmware for LG01? Where can I find the source code of LG01? .....	44
10.7	How to get more examples for this device? .....	44
11	Trouble Shooting.....	45
11.1	I can't download the Dragino profile in Arduino IDE.....	45
11.2	Bridge between MCU and Linux module doesn't work.....	46
11.3	Arduino IDE doesn't detect LG01.....	46
11.4	I get kernel error when install new package, how to fix? .....	46
11.5	How to recover the LG01 if firmware crash .....	47
11.6	I configured LG01 for WiFi access and lost its IP. What to do now? .....	48
12	Order Info.....	49
13	Packing Info .....	49
14	Support.....	49
15	Reference .....	51

## 1 Introduction

### 1.1 Overview

### 1.2 What is LG01

The LG01 is an open source single channel LoRa Gateway. It lets you bridge LoRa wireless network to an IP network base on WiFi, Ethernet, 3G or 4G cellular. LG01 runs on open source embedded Linux system; it has USB host port and has full Ethernet and 802.11 b/g/n WiFi capabilities. The USB host port can be used to connect cellular modules so LG01 is very flexible to bridge LoRa Network to different kinds of network to fit user's requirement.



### 1.3 Specifications

#### Hardware System:

##### Linux Part:

- 400Mhz ar9331 processor
- 64MB RAM
- 16MB Flash

##### MCU Part:

- MCU: ATmega328P
- Flash: 32KB
- SRAM: 2KB
- EEPROM: 1KB

#### Interface:

- Power Input: 9 ~ 24v DC
- 2 x RJ45 ports
- USB 2.0 Host port x 1
- Internal USB 2.0 Host Interface x 1

**WiFi Spec:**

- IEEE 802.11 b/g/n
- Frequency Band: 2.4 ~ 2.462GHz
- Tx power:
  - ✓ 11n tx power : mcs7/15: 11db      mcs0 : 17db
  - ✓ 11b tx power: 18db
  - ✓ 11g 54M tx power: 12db
  - ✓ 11g 6M tx power: 18db
- Wifi Sensitivity
  - ✓ 11g 54M : -71dbm
  - ✓ 11n 20M : -67dbm

**LoRa Spec:**

- Frequency Range:
  - ✓ Band 1 (HF): 862 ~ 1020 Mhz
  - ✓ Band 2 (LF): 410 ~ 528 Mhz
- 168 dB maximum link budget.
- +20 dBm - 100 mW constant RF output vs.
- +14 dBm high efficiency PA.
- Programmable bit rate up to 300 kbps.
- High sensitivity: down to -148 dBm.
- Bullet-proof front end: IIP3 = -12.5 dBm.
- Excellent blocking immunity.
- Low RX current of 10.3 mA, 200 nA register retention.
- Fully integrated synthesizer with a resolution of 61 Hz.
- FSK, GFSK, MSK, GMSK, LoRa™ and OOK modulation.
- Built-in bit synchronizer for clock recovery.
- Preamble detection.
- 127 dB Dynamic Range RSSI.
- Automatic RF Sense and CAD with ultra-fast AFC.
- Packet engine up to 256 bytes with CRC.
- Built-in temperature sensor and low battery indicator.

**Cellular 4G LTE (optional):**

- Quectel [EC20 LTE module](#)
- Micro SIM Slot
- Internal 4G Antenna + External 4G Sticker Antenna.
- Up to 100Mbps downlink and 50Mbps uplink data rates
- Worldwide LTE, UMTS/HSPA+ and GSM/GPRS/EDGE coverage
- MIMO technology meets demands for data rate and link reliability in modern wireless communication systems

**Cellular 3G UMTS/HSPA+ (optional):**

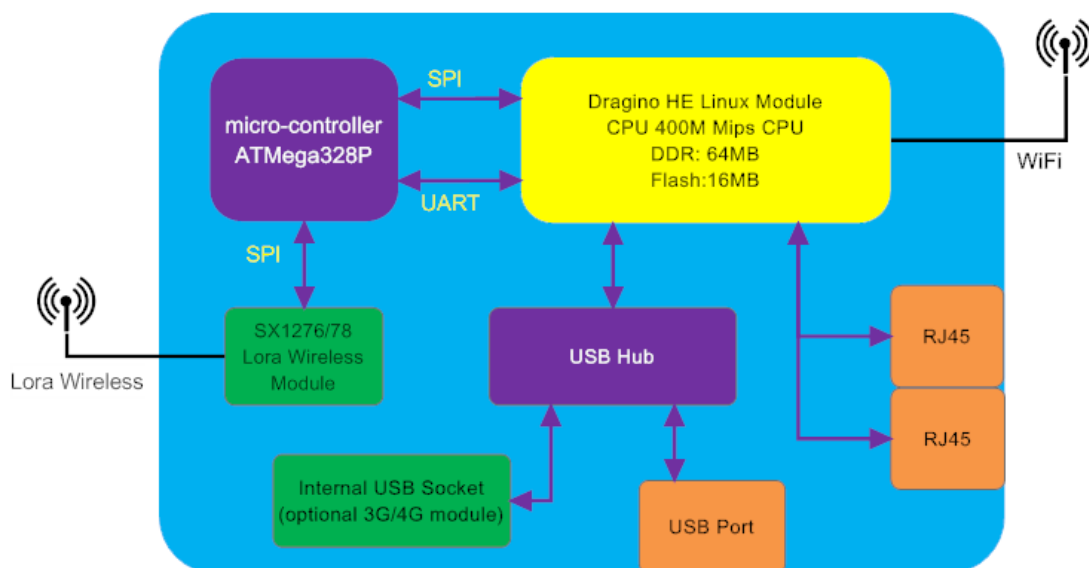
- Quectel [UC20 LTE module](#)
- Micro SIM Slot
- Internal 3G/4G Antenna + External 3G/4G Sticker Antenna.
- Up to 14.4Mbps downlink and 5.76Mbps uplink data rates
- Worldwide UMTS/HSPA+ and GSM/GPRS/EDGE coverage
- High-quality data and image transmission even in harsh environment
- Primary and diversity receive paths are designed for equivalent noise-figure performance

## 1.4 Features

- ✓ Open source Linux (OpenWrt) inside. User can modify or compile the firmware with custom features and own brand.
- ✓ Low power consumption.
- ✓ Compatible with Arduino IDE 1.5.4 or later, user can program, debug or upload sketch to the MCU via Arduino IDE.
- ✓ Managed by Web GUI, SSH via LAN or WiFi.
- ✓ Software upgradable via network.
- ✓ Auto-Provisioning.
- ✓ Built-in web server.
- ✓ Support internet connection via LAN port, WiFi or 3G /4G dongle.
- ✓ Failsafe design provides robustly system.

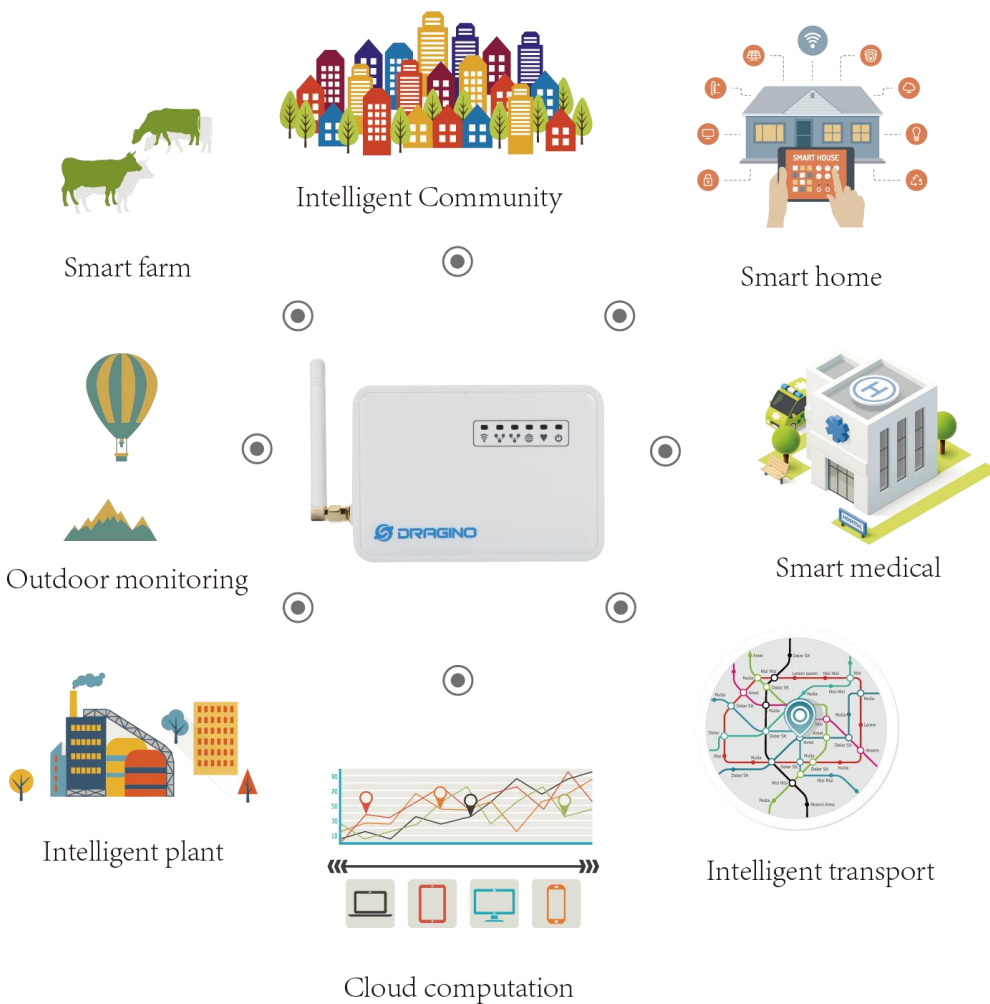
## 1.5 System Structure

LG01 System Overview:



## 1.6 Applications




### Dragino Lora Gateway for IoT Applications





### 1.7 Hardware Variants

There are different LG01 variants for difference applications. Below table shows the difference between these models.

Model	Photo	Description
LG01-P		The most general version can be used as a LoRa Gateway.
LG01-S		Include screw terminal which can connect to external sensors
OLG01		Our door version, this version doesn't include LoRa antenna, instead, it has a SMA connector, user can connect it to a high gain LoRa antenna. It can be powered by a passive PoE adapter.

### 1.8 Install SIM card in EC20/UC20 3G/4G module

Please use below direction to install the SIM card.



## 2 Quick Start Guide

### 2.1 Access and config LG01

The LG01 is configured as a WiFi AP by factory default. User can access and configure the LG01 after connect to its WiFi network.

At the first boot of LG01, it will auto generate an unsecure WiFi network call **dragino2-xxxxxx**

User can use the laptop to connect to this WiFi network. The laptop will get an IP address 10.130.1.xxx and the LG01 has the default IP **10.130.1.1**



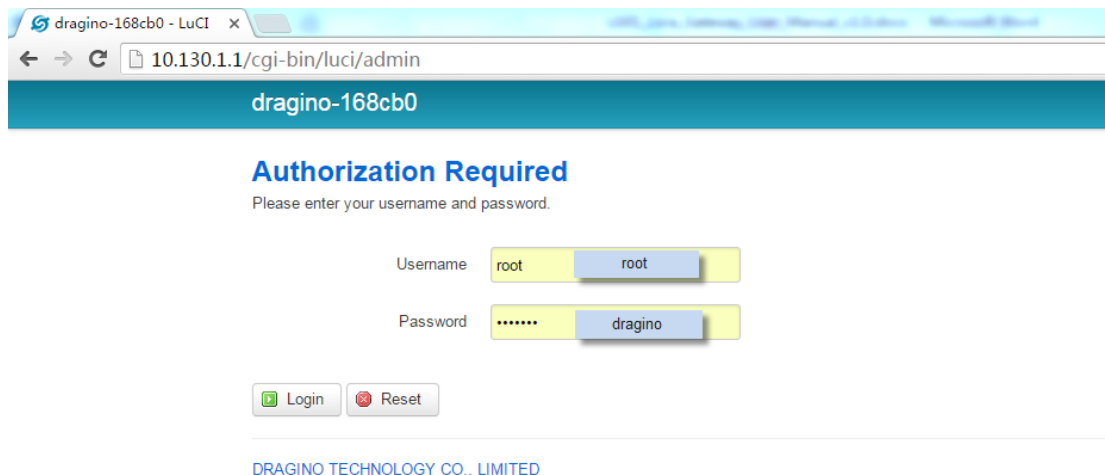
Open a browser in the laptop and type 10.130.1.1

User will see the login interface of LG01.

The account for Web Login is:

**User Name:** root

**Password:** dragino



## 2.2 Program microcontroller.

The MCU (microcontroller) M328P is used to communicate with LoRa Radio part and Dragino Linux module. The program language for the MCU is based on C and program tool is Arduino IDE. Below the way shows how to do program it.

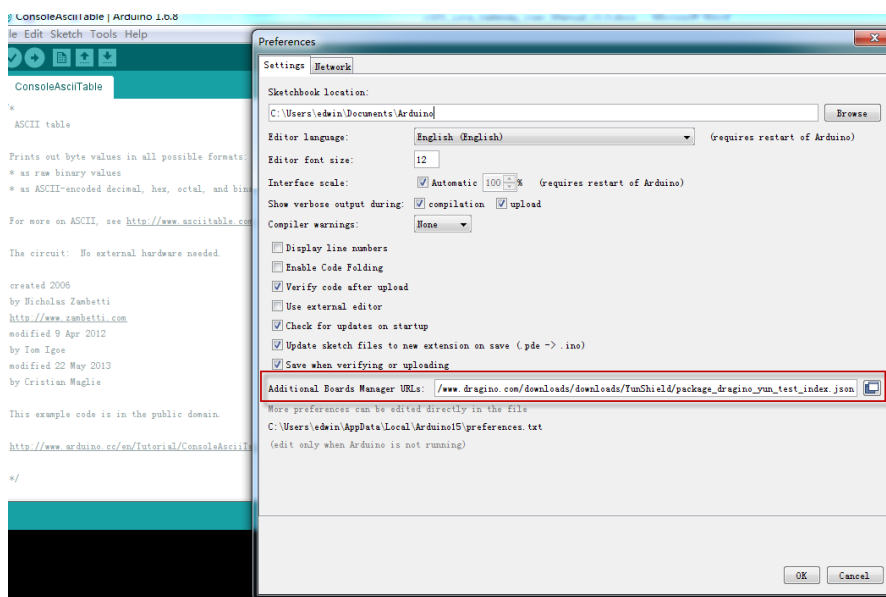
### 2.2.1 Download and configure Arduino IDE

- Download the latest Arduino Software(IDE) from Arduino official site:

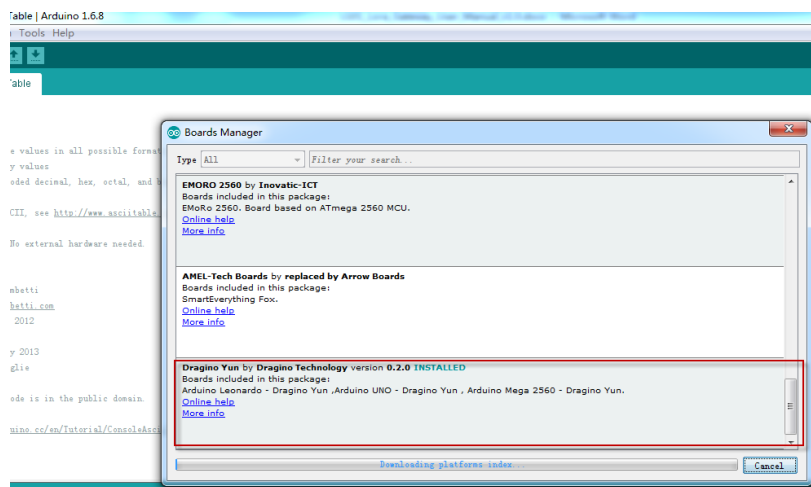
<https://www.arduino.cc/en/Main/Software>

Install the IDE in the PC, open it and click **File --> Preference**, add below URL

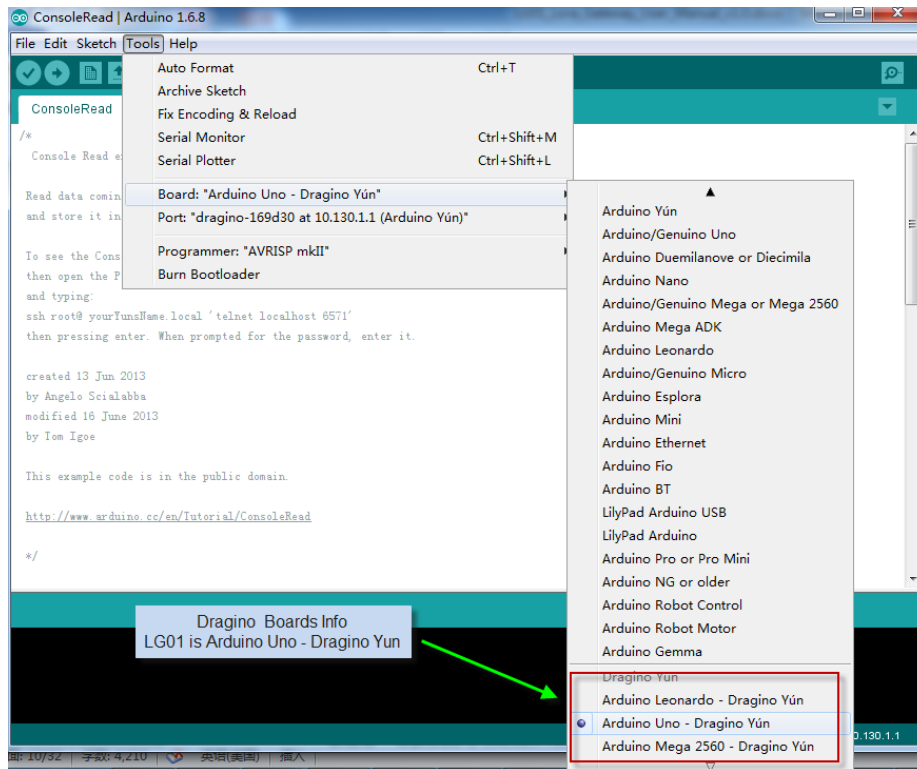
[http://www.dragino.com/downloads/downloads/YunShield/package\\_dragino\\_yun\\_test\\_index.js](http://www.dragino.com/downloads/downloads/YunShield/package_dragino_yun_test_index.js) on in the **Additional Boards Manager URLs**.



- Go to **tools --> Boards --> Boards Manager**, find Dragino boards info and install it.



- After install Dragino's board info in the IDE, we can see the boards info from the IDE, as below screenshot. For LG01, we should choose: **Arduino Uno – Dragino Yun**.

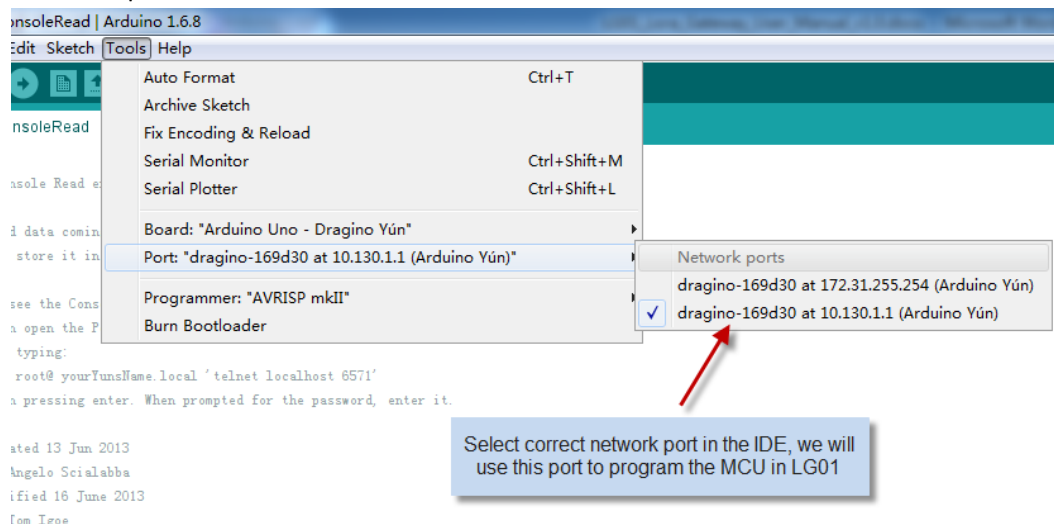


**Note:** If user has trouble to install via Board Manager. User can [manually add the board profile](#).

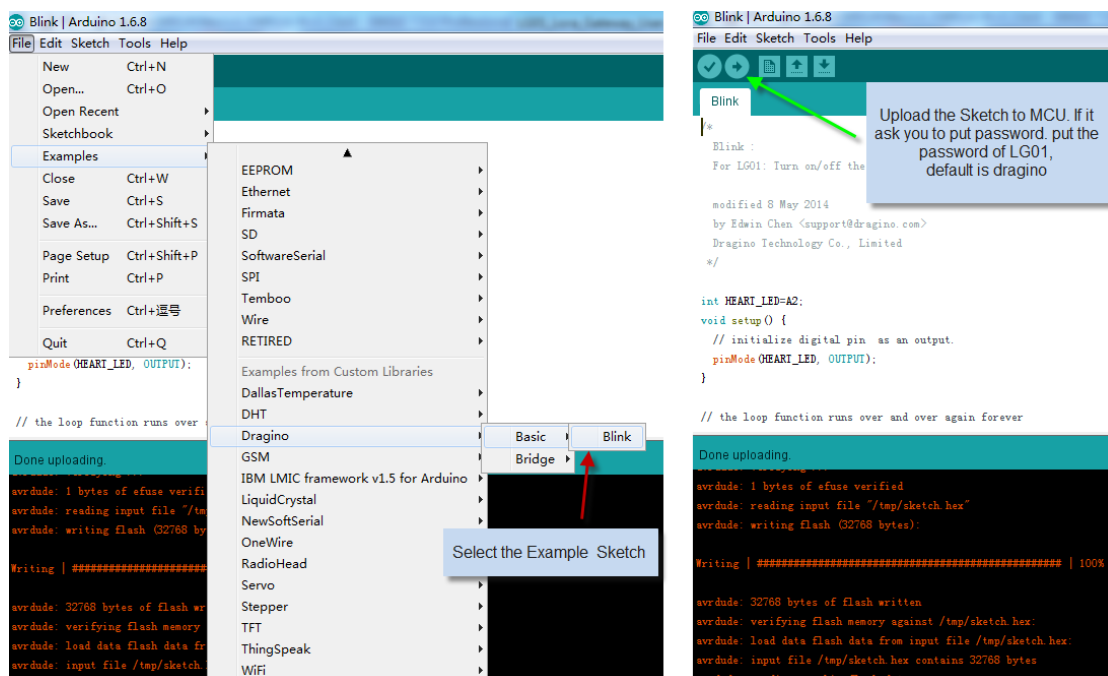
## 2.2.2 Upload a sketch in the MCU

For the very start, we can try to upload a simple sketch to the MCU and see how it works.

- Make sure your computer and the LG01 is in the same network, if you already connect to the LG01 WiFi SSID, then both devices are in the same WiFi network. In the IDE, select the correct port as below screenshot.



- Select the example from **IDE --> File --> Examples --> Dragino --> Basic --> Blink**  
Click **Upload** to upload the sketch to LG01, the LG01 may ask you password to upload, if so, type the password of LG01.



➤ Check result

The blink sketch will set the A2 pin of the MCU to periodically high and low. This pin connects to the **HEART LED** of the LG01. So if successfully upload this sketch, user can see the **HEART LED** turn on and turn off periodically.

## 2.3 Simple LoRa wireless example

To test LoRa wireless, we at least need 2 devices support LoRa. In this example we will use below devices:

- LoRa Server: LG01 ; LoRa Client: LoRa Shield + Arduino Uno



Or

- LoRa Server: LG01 ; LoRa Client: LG01

Above two combination will shows the same LoRa feature, we provide different devices examples in LoRa Client which is for user convenient only.



### 2.3.1 Installing LoRa Library

The Library used here is Radiohead Library, Which can be download from

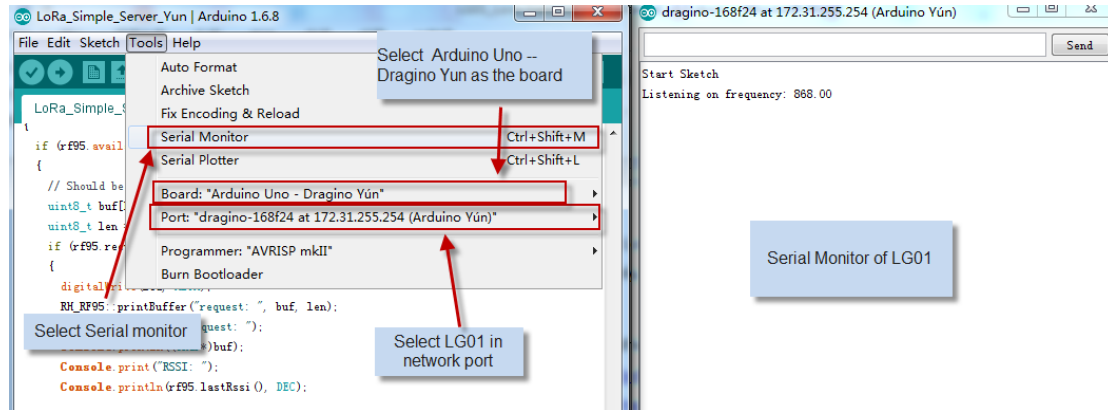
<http://www.airspayce.com/mikem/arduino/RadioHead/RadioHead-1.63.zip> . unzip it and put it in the Arduino Library Folder. Reference: [Installing Library in Arduino](#)

### 2.3.2 Upload LoRa Server Sketch

Select the example from:

**IDE --> File --> Examples --> Dragino --> LoRa --> LoRa\_Simple\_Server\_Yun**

Upload this Sketch to the LG01, then open the serial monitor to monitor the LG01 status, as below screenshot



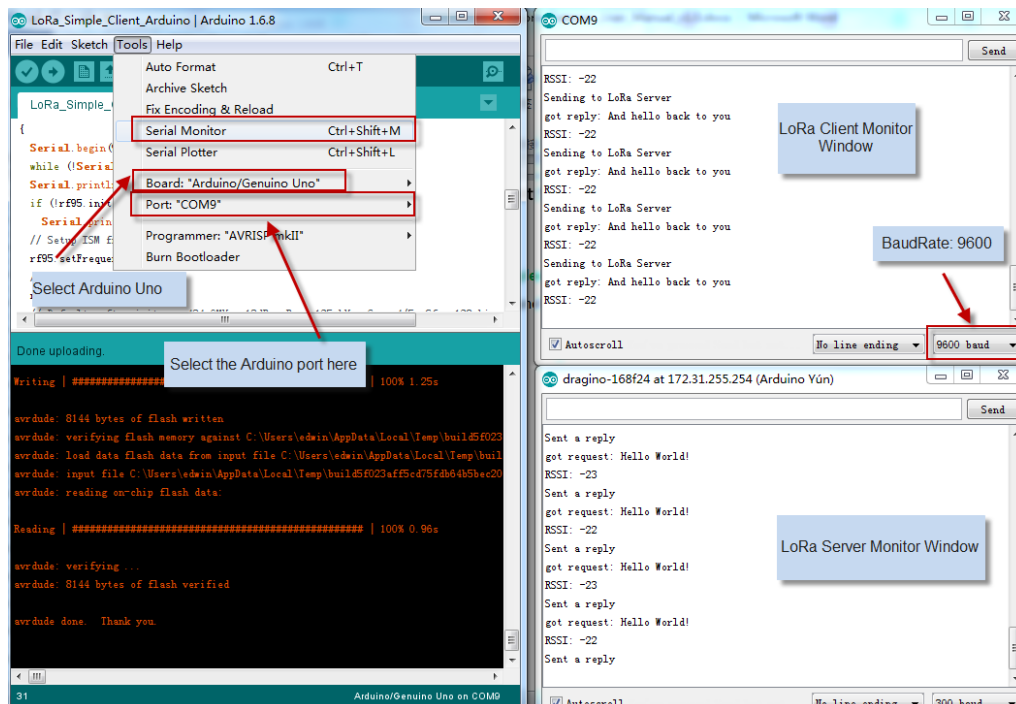
### 2.3.3 Upload LoRa Client Sketch

**For LoRa Shield + Arduino as LoRa Client:**

Select the example from:

**IDE --> File --> Examples --> Dragino --> LoRa --> LoRa\_Simple\_Client\_Arduino**

Upload it to Arduino board, and open the serial monitor , you will get as below screenshot.



**For another LG01 as LoRa Client:**

Method is same as above, but the example sketch is:

**IDE --> File --> Examples --> Dragino --> LoRa --> LoRa\_Simple\_Client\_Yun**



### 3 Typical Network Setup

#### 3.1 Overview

LG01 support flexible network set up for different environment. This section describes the typical network topology can be set in LG01. The typical network set up includes:

- ✓ **WAN Port Internet Mode**
- ✓ **WiFi Client Mode**
- ✓ **WiFi AP Mode**
- ✓ **Mesh WiFi Network**
- ✓ **USB Dial Up Mode**
- ✓ **USB Ethernet Mode**

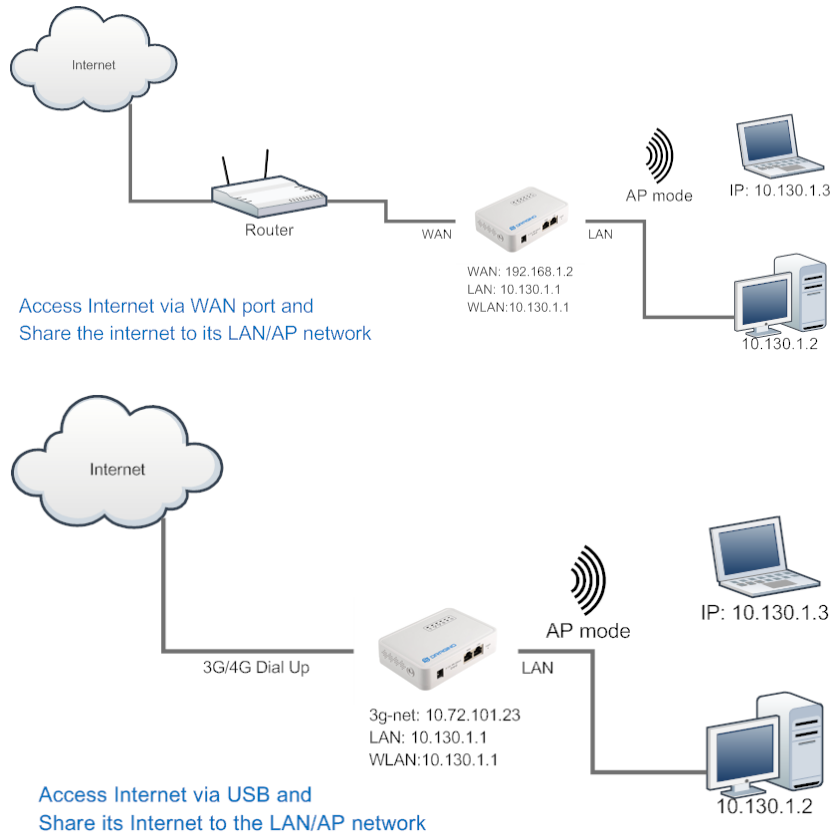
Before setting network parameters, user can set up the Display Net Connection under **Web --> Network --> Internet Access** for easily checking network status. LG01 will check the network connection to the host and show the status in **GLOBAL LED**. The **GLOBAL LED** will blink if LG01 has network connection to that host.



The network settings are under the network section, in the follow section of this chapter, we will show how to configure the LG01 for typically network usage.

### 3.2 General WiFi AP Network

In the General AP Mode, LG01 gets internet access from its WAN port or USB 3G/4G/GPRS. LG01 itself acts as a WiFi Access Point and provide a WiFi AP network. LG01 shares the internet to its AP network or LAN interface. Diagram is as below:



#### Set Up in Web UI for General WiFi AP mode

##### Network --> Internet Access:

- ✓ Access Internet via WAN PORT or USB Modem

##### Network --> LAN and DHCP

- ✓ Enable DHCP server in its LAN port

##### Network --> Access Point

- ✓ Enable WiFi AP
- ✓ Input SSID/ Encryption/ Passphrase

##### Network --> Mesh Network:

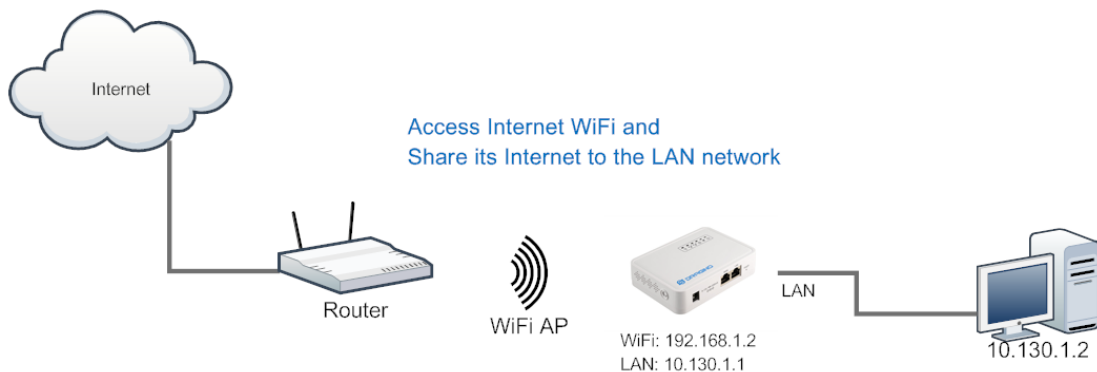
- ✓ Disable WiFi Mesh Network

### 3.3 WAN Port Internet Mode

The LG01 will use WAN port for internet connection. When connect LG01's WAN port to router, LG01 will get IP from router and have internet access. This is the default setting. It also shares the internet to its LAN port and WiFi AP network for other devices.

### 3.4 WiFi Client Mode

In the WiFi Client Mode, Dragino acts as a WiFi client and gets DHCP from uplink router via WiFi. It also shares the internet to its LAN port for other devices.



#### Set Up in Web UI

##### Network --> Internet Access:

- ✓ Access Internet via WiFi Client
- ✓ Way to Get IP: DHCP
- ✓ Input correct SSID, Password and Encryption.

##### Network --> LAN and DHCP

- ✓ Enable DHCP server in its LAN port

##### Network --> Access Point

- ✓ Disable WiFi AP

##### Network --> Mesh Network

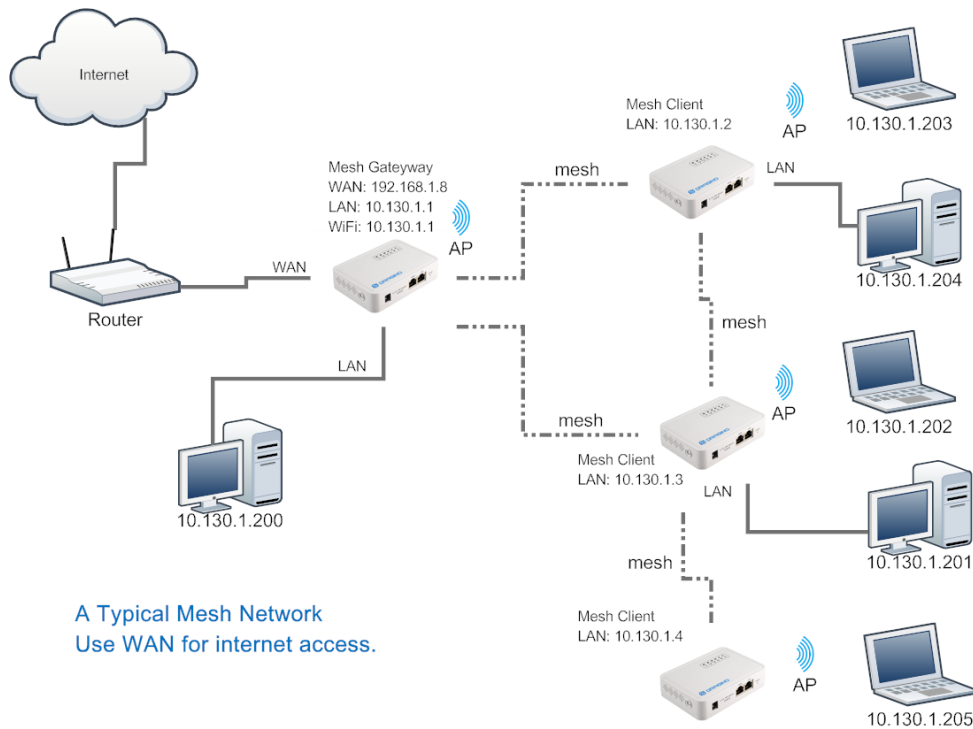
- ✓ Disable WiFi Mesh Network

### 3.5 Mesh WiFi Network

In the mesh network topology, user should choose the device to be a mesh gateway node or mesh client node

**Mesh Gateway:** use WAN port or USB 3G/4G modem to get internet access from uplink router. It also shares the internet to its Mesh Network for other Mesh Clients. The Mesh Gateway also acts as a DHCP router for its mesh network.

**Mesh Client:** Connects to the Mesh Gateway via mesh network, it also bridge internet via the LAN and WiFi AP interface.

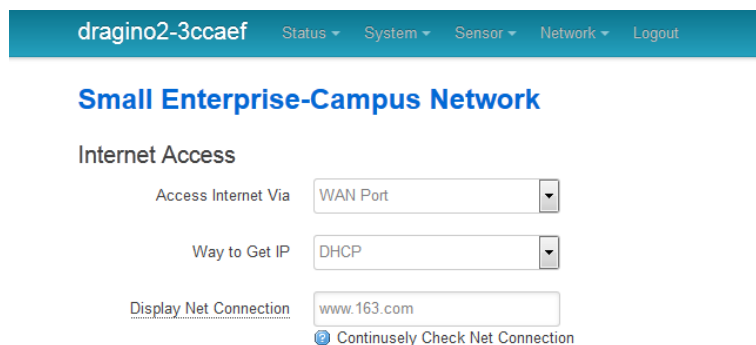


A Typical Mesh Network  
Use WAN for internet access.

#### 3.5.1 Mesh Gateway Set Up

##### Network --> Internet Access

Access Internet via WAN PORT or USB Modem



- ✓ Select Internet Connection Method for mesh gateway

## Network --> LAN and DHCP

dragino2-4dffbf   Status ▾   System ▾   Sensor ▾   Network ▾   Logout

### Small Enterprise-Campus Network

LAN and DHCP   **Gateway Node Settings**

IP Address: 10.130.1.1 IP Address for its LAN and AP interface.

Enable DHCP:  Enable DHCP Server Enable DHCP Server

Authoritative:  Enable DHCP Authoritative

LAN Gateway: 255.255.255.255 Packets from LAN port and WiFi Interface (AP and Mesh) will be forward to its WAN interface

Subnet Mask: 255.255.255.0

DHCP Start IP: 10.130.1.200

- ✓ Enable DHCP server in its LAN port
- ✓ Set Gateway to 255.255.255.255

## Network --> Access Point

- ✓ Enable WiFi AP (not necessary), Can set same SSID in the mesh network

### Small Enterprise-Campus Network

Access Point

Enable WiFi AP:  Enable WiFi AP

Station ID: Dragino2-3ccaef

Encryption: WPA2

Passphrase: .....

Channel: Channel 6

AP Connections: 30

## Network --> Mesh Network

- ✓ Enable WiFi Mesh Network
- ✓ Input Mesh Group //Note: Mesh Device within same group can communicate with each other. Mesh Group is a translation for BSSID for easy configure and remember.

dragino-169d30   Status ▾   Sensor ▾   System ▾   Network ▾   Logout

### Small Enterprise-Campus Network

#### Mesh Setting

Mesh devices with the same group ID and AP wifi channel can communicate with each other

Enable Mesh:  Enable Mesh Network

Group ID: 10000   
 Input a number between 1 ~ 1099511627775

#### Mesh Gateway

Gateway Mode: OFF

### 3.5.2 Mesh Client Set Up

#### Network --> Internet Access

- ✓ Access Internet set to Disable

dragino2-f531b1   Status ▾   System ▾   Sensor ▾   Network ▾   Logout

### Small Enterprise-Campus Network

#### Internet Access

Access Internet Via    ▾   Disable its WAN access, so packets will pass to Mesh Interface.

Display Net Connection  

Continuously Check Net Connection

#### Network --> LAN and DHCP

- ✓ Disable DHCP server in its LAN port and
- ✓ Set gateway point to mesh gateway.

dragino2-f531b1   Status ▾   System ▾   Sensor ▾   Network ▾   Logout

### Small Enterprise-Campus Network

#### LAN and DHCP

IP Address      Set a unique IP address for its LAN and WiFi interface.

Enable DHCP     Enable DHCP Server   Disable DHCP server in this device.

LAN Gateway      Use the Gateway Node as Default Gateway

Enable Fallback IP     Fallback IP is permanent IP in LAN port, active after reboot

### Network --> Access Point

- ✓ Enable WiFi AP (not necessary, can use same SSID or difference SSID with other mesh node)

dragino2-b170b1 Network

**No password set!**  
There is no password set on this router. Please configure a root password to protect the web interface and [Go to password configuration...](#)

### Small Enterprise-Campus Network

#### Access Point

Enable WiFi AP  [Enable WiFi AP](#)

Station ID

Encryption

Passphrase  [?](#)

CAN/US Reg

Channel

### Network --> Mesh Network

- ✓ Enable WiFi Mesh Network
- ✓ Input Mesh Group //Note: Mesh Device within same group can communicate with each other. Mesh Group is a translation for BSSID for easy configure and remember.

dragino-169d30 Status Sensor System Network Logout

### Small Enterprise-Campus Network

#### Mesh Setting

Mesh devices with the same group ID and AP wifi channel can communicate with each other

Enable Mesh  [Enable Mesh Network](#)

Group ID  [?](#) Input a number between 1 ~ 1099511627775

#### Mesh Gateway

Gateway Mode

### 3.6 USB Dial Up Modem Set Up

Dragino USB interface can be used for GPRS/3G/4G connections. Below are some set up examples.

**Note: if user use EC20/UC20 module, he just need to choose USB modem in the internet setting and reboot the device. the device will auto configure to support these modules.**

#### WCDMA set up example:

dragino2-3ccaef
Network -

USB Modem Setting	
USB Modem	Manufacturer:HUAWEI Technology, Vendor ID:12d1, Product ID:1436 <span style="float: right;">Auto Detect USB Devices</span>
Modem Status	inet addr:10.72.101.23 P-t-P:10.64.64.64 Mask:255.255.255.255 <span style="float: right;">Connection Status</span>
Available USB Port	/dev/ttyUSB1 /dev/ttyUSB2 /dev/ttyUSB3 /dev/ttyUSB4 <span style="float: right;">A modem is always detected to have several USB port for different features</span>
USB Modem Service	UMTS <span style="float: right;">3G WCDMA</span>
VID	12d1 <span style="float: right;">Vendor ID as shown in USB info section</span>
PID	1436 <span style="float: right;">Product ID as shown in USB info section</span>
Service APN	3gnet <span style="float: right;">Service APN. 3gnet is for China Unicom</span>
Dial String	*99# <span style="float: right;">Dial String, Default *99#</span>
Username	<input type="text"/> <span style="float: right;">Leave blank if no provided by your provider</span>
Password	<input type="password"/> <span style="float: right;">Leave blank if no provided by your provider</span>
PIN	<input type="text"/> <span style="float: right;">Leave blank if no provided by your provider</span>
USB Serial Port	ttyUSB1 <span style="float: right;">The USB port of your dongle used for Dial Up.</span>

#### 3G EV-DO/CDMA2000 Set Up Example for China Telecom:



dragino2-3ccaef
Status ▾
System ▾
Sensor ▾
Network ▾
Logout

**3G EV-DO dial up example:**  
 Provider: China Telecom 3G  
 USB Dongle: ZTE AC582

**USB Modem Setting**

USB Modem Manufacturer:ZTE, Vendor ID:19d2, Product ID:0152

Modem Status

Available USB Port /dev/ttyUSB0 /dev/ttyUSB1 /dev/ttyUSB2 /dev/ttyUSB3 /dev/ttyUSB4

USB Modem Service EV-DO ▾ Choose EV-DO

VID 19d2 Input USB dongle VID

PID 0152 Input USB dongle PID

Service APN  

Dial String #777 Dial String for Chinatelecom

Username ctnet@mycdma.cn User Name

Password •••••••• Password

PIN  

USB Serial Port ttyUSB0 ▾ Choose USB Serial Port for 3G

Save & Apply

### 3.7 USB 3G/4G Ethernet Dongle

Some USB dongles are not using the dial up to connect internet. Instead, they appear as a network interface and has built-in router feature. Huawei Hilink dongles are a typical of these. When user plug such dongle into computer, it will auto connect to Internet and redirect to a web interface, when plug such dongle into the MS14, a new interface will appear (typically eth2eth2 or usb0) by running command "ifconfig -a"

User can use the Web UI to configure use these dongle for internet connection directly.

```

172.31.255.254 - SecureCRT
文件(F) 编辑(E) 查看(V) 选项(O) 传输(T) 脚本(S) 工具(L) 帮助(H)
173.236.176.38-dreamhost | 172.31.255.254
collisions:0 txqueuelen:1000
RX bytes:138038 (134.8 KiB) TX bytes:490130 (478.6 KiB)
Interrupt:5

eth1  Link encap:Ethernet  Hwaddr A8:40:41:14:31:E6
      BROADCAST MULTICAST  MTU:1500  Metric:1
      RX packets:0 errors:0 dropped:0 overruns:0 frame:0
      TX packets:0 errors:0 dropped:0 overruns:0 carrier:0
      collisions:0 txqueuelen:1000
      RX bytes:0 (0.0 B)  TX bytes:0 (0.0 B)
      Interrupt:4

eth2  Link encap:Ethernet  Hwaddr 58:2C:80:13:92:63
      inet addr:192.168.1.100 Bcast:192.168.1.255 Mask:255.255.255.0
      inet6 addr: fe80::5a2c:80ff:fe13:9263/64 Scope:Link
      UP BROADCAST RUNNING MULTICAST  MTU:1500  Metric:1
      RX packets:331 errors:0 dropped:0 overruns:0 frame:0
      TX packets:325 errors:0 dropped:0 overruns:0 carrier:0
      collisions:0 txqueuelen:1000
      RX bytes:32990 (32.2 KiB)  TX bytes:26875 (26.2 KiB)

lo    Link encap:Local Loopback
      inet addr:127.0.0.1  Mask:255.0.0.0
      inet6 addr: ::1/128 Scope:Host
      UP LOOPBACK RUNNING  MTU:65536  Metric:1
      RX packets:134 errors:0 dropped:0 overruns:0 frame:0
  
```

new interface  
from USB  
modem

a new interface generate by USB Ethernet modem



The screenshot shows the web interface for 'dragino-1431e4'. The page title is 'Small Enterprise-Campus Network'. Under the 'Internet Access' section, there are two configuration fields:

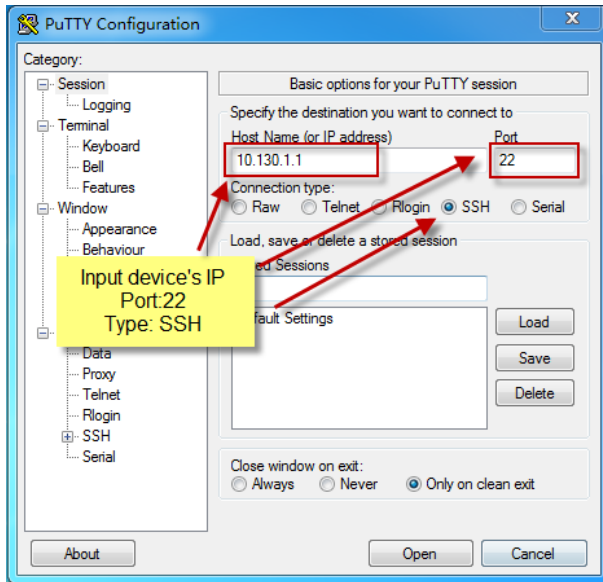
- 'Access Internet Via' is set to 'USB Ethernet Modem'. A green box highlights the text 'Use USB Ethernet Modem for network connection'.
- 'USB Ethernet Interface' is set to 'eth2'. A green box highlights the text 'input the USB Ethernet Interface'.

## 4 Linux System

The LG01 bases on OpenWrt Linux System. It is open source, and user are free to configure and modify the inside Linux settings.

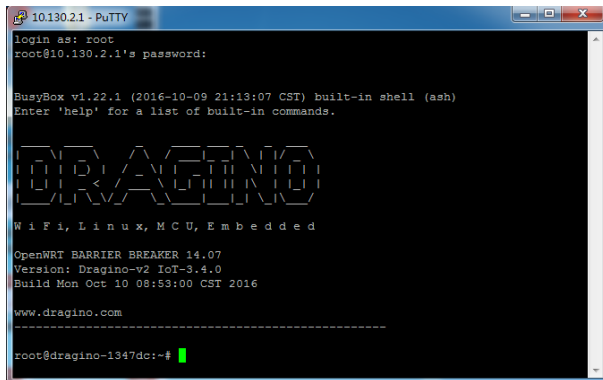
### 4.1 SSH Access for Linux console

User can access to the Linux console via SSH protocol. Make sure your PC and the LG01 is in the same network, then use a SSH tool (such as [putty](#)) to access it. Below are screenshots:



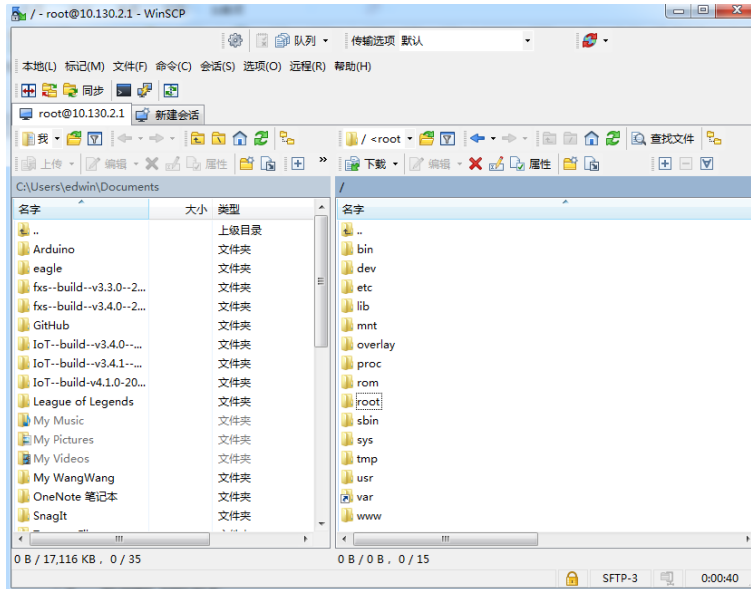
IP address: IP address of LG01  
Port: 22  
User Name: root  
Password: dragino (default)

After log in, you will be in the Linux console and type command here.



## 4.2 Edit and Transfer files

The LG01 support **SCP protocol** and has a built **SFTP server**. There are many ways to edit and transfer files using these two protocols. One of the easiest is through [WinSCP](#) utility. After access via WinSCP to the device, use can use a FTP alike window to drag / drop files to the LG01 or Edit the files directly in the windows. Screenshot is as below:



## 4.3 File System

The LG01 has a 16MB flash and a 64MB RAM. The /var and /tmp directory are in the RAM, that means content in /tmp and /var will be erase after reboot the device. Other directories are in the flash and will keep after reboot.

The Linux system use around 8MB ~10MB flash size which means there is not much room for user to store data in the LG01 flash. User can use an external USB flash to extend the size for storage.

#### 4.4 Package maintain system

LG01 uses [OPKG package maintain system](#). There are more than 3000+ packages available in our package server for user to install for their applications. For example, if user wants to add MQTT support, they can install the related packages and configure LG01 to support MQTT

Below is some examples opkg command, more please refer [OPKG package maintain system](#)

In Linux Console run:

```
root@dragino-169d30:~# opkg update // to get the latest packages list
```

```
root@dragino-169d30:~# opkg list //shows the available packages
```

```
root@dragino-169d30:~# opkg install mosquitto-client // install MQTT client, it will auto install the required packages.
```

```
Installing mosquitto-client (1.3.5-1) to root...
```

```
Downloading
```

```
http://downloads.openwrt.org/barrier_breaker/14.07/ar71xx/generic/packages/packages/mosquitto-client_1.3.5-1_ar71xx.ipk.
```

```
Installing libcares (1.10.0-1) to root...
```

```
Downloading
```

```
http://downloads.openwrt.org/barrier_breaker/14.07/ar71xx/generic/packages/packages/libcares_1.10.0-1_ar71xx.ipk.
```

```
Installing libmosquitto (1.3.5-1) to root...
```

```
Downloading
```

```
http://downloads.openwrt.org/barrier_breaker/14.07/ar71xx/generic/packages/packages/libmosquitto_1.3.5-1_ar71xx.ipk.
```

```
Configuring libcares.
```

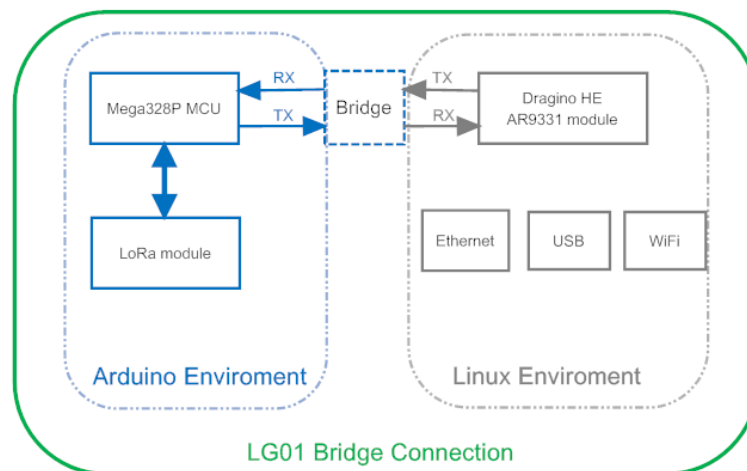
```
Configuring libmosquitto.
```

```
Configuring mosquitto-client.
```

## 5 Bridge Library

The bridge library is the most important part of LG01. Bridge library defines a mechanism how the MCU talk to the CPU (ar9331). With the bridge library, the MCU can send data to CPU, get commands result from CPU or call commands in CPU.

The bridge Library use UART port to communicate between MCU and ar9331. Below is the block diagram shows the bridge connection between the Mega328P MCU and Linux.



Detail instruction of how to use the bridge library can be found in [Arduino Bridge Library](#). Due to hardware difference, there are some points when we read and use the Bridge Examples from Arduino site:

- We recommend user to tried the examples under [Arduino IDE --> Files --> Examples --> Dragino](#) first.
- When use the Bridge class, user need to call `Bridge.begin(115200)` in the sketch for LG01.
- In the default bridge examples from Arudino IDE, it uses `Serial` class to print debug info. This doesn't work in LG01. Because the `Serial Class` will call Mega328P's hardware serial port , it will be conflict with the Bridge Library. If user needs to print debug info, please use the `console` class.

## 6 Advance Management

### 6.1 Reset Network or Reset to Factory Default

LG01 provide ways for user to reset the device. When the Linux system is running, user can press the toggle button to reset the device. the pressing time will determine which part is to be reset.

- Pressing the toggle button, the **GLOBAL LED** will blink, release the button after 5 seconds, device will reset the network setting and reboot (GLOBAL/LAN/WAN/WiFi blink once), other settings will be kept.
- Pressing the toggle button, the **GLOBAL LED** will blink, release the button after 30 seconds, device will reset ALL the setting to factory default and reboot (GLOBAL/LAN/WAN/WiFi blink once) .

## 7 Upgrade Firmware

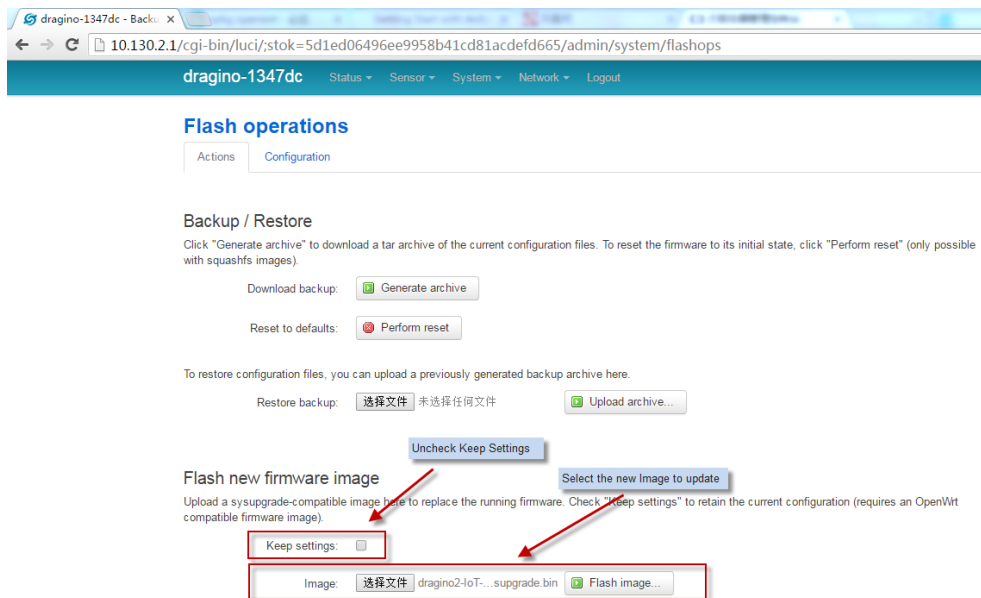
We keep improving the LG01 Linux side firmware for new features, bug fixes. The latest firmware can be found on [IoT Mesh Firmware](#), and the Change Log can be found here: [Firmware Change Log](#).

The file named as **dragino2-iot--xxxxx-squashfs-sysupgrade.bin** is the upgrade Image. There are different method to upgrade, as below:

### 7.1 Upgrade via Web UI

Go to the page: **Web --> System --> Back Up and flash firmware**, Select the image and click Flash Image, the image will be uploaded to the device and then click Process Update to upgrade.

System will auto boot to the new firmware after upgrade.



### 7.2 Upgrade via Linux console

SCP the firmware to the system **/var** directory and then run

```
root@OpenWrt:~# /sbin/sysupgrade -n /var/Your_Image
```

**note:** it is important to transfer the image in the **/var** directory, otherwise it may exceed the flash size.



## 8 Auto-Update

### 8.1 Auto update MCU

Since Firmware IoT-4.1.1, auto update sketch is supported. With this feature, the Dragino's will connect to a http/https server and get the latest sketch version and upload the sketch with this version. The purpose of this feature is to reduce the tech support cost / time for remote installation.

The feature can be configured in the page [sensors -> microcontroller](#).

1.255.254/cgi-bin/luci/stok=e21b7fdade1d042f42c26c9a3d744f5f/admin/sensor/mcu

dragino Status - Sensor - System - Network - Logout

Auto detected by software on boot

Add Bootloader  Add Arduino bootloader while upload

#### Auto Update MCU Image

Auto Update On Boot  Auto update once device boot

Current Image Version    
Current Image Version used in the MCU

Update URL    
Get Update Info from this URL

Enable MAC Identify  maintain different update info for different device

Update Info    
File Includes Update Information

Save & Apply Save Reset

- **Auto Update On Boot:** While this option is enabled. Device will connect to the auto server on every boot and check if there is new version of Sketch to be update. If Device find newer version on the auto update server, device will download it from the server and update the mcu with this new version.
- **Current Image Version:** Shows the current sketch version. By default it is 0. Device will update this version to the latest version number only after auto update successful.
- **Update URL:** This URL contact the update information and the sketch.hex file. Device will connect to this URL to check if there is newer version in the server.
- **Update Info:** The text file includes the update information. An example for this file can be found here: [example for update information file](#). It should include:
  - **image:** the sketch used for auto update
  - **md5sum:** md5sum for this sketch.
  - **version:** the latest version number.
- **Enable MAC Identify:** Instead of getting update information as specified in **Update Info**, The device will look for the update information from the file: **wifi\_mac.txt**. Which means, if the device has wifi mac address A840417867AF, device will download the file: \$Update\_URL/A840417867AF.txt for auto update information.

## Procedure for Auto Update Sketch:

Assume we have below configured:

**Auto Update On Boot:** checked

**Update URL:** <http://www.dragino.com/downloads/downloads/tmp/autoupdate/>

**Update Info:** update\_info

**Enable MAC Identify:** unchecked

After reboot, the device will do auto update as below:

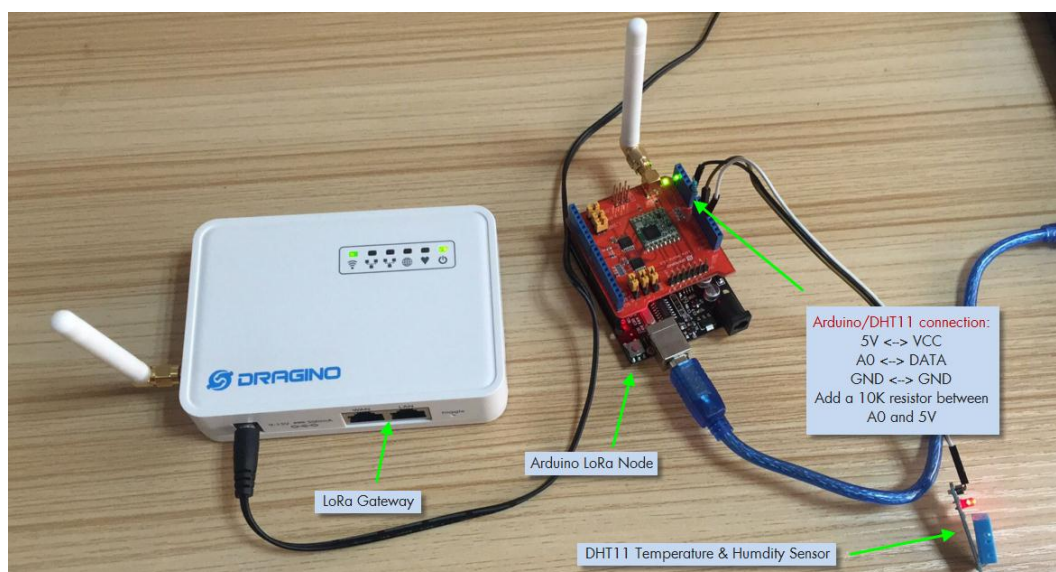
1. Download the update information  
from [http://www.dragino.com/downloads/downloads/tmp/autoupdate/update\\_info](http://www.dragino.com/downloads/downloads/tmp/autoupdate/update_info)
2. Compare the Latest version and the version on the device
3. If server has a higher version, Device will  
download <http://www.dragino.com/downloads/downloads/tmp/autoupdate/sketch.hex>
4. Do a md5sum check to verify the downloaded sketch is fine
5. Update the MCU with the newer version sketch
6. Update the version number to the latest version number

## 9 Advance Examples

### 9.1 Upstream: Get data from LoRa node and send to IoT server

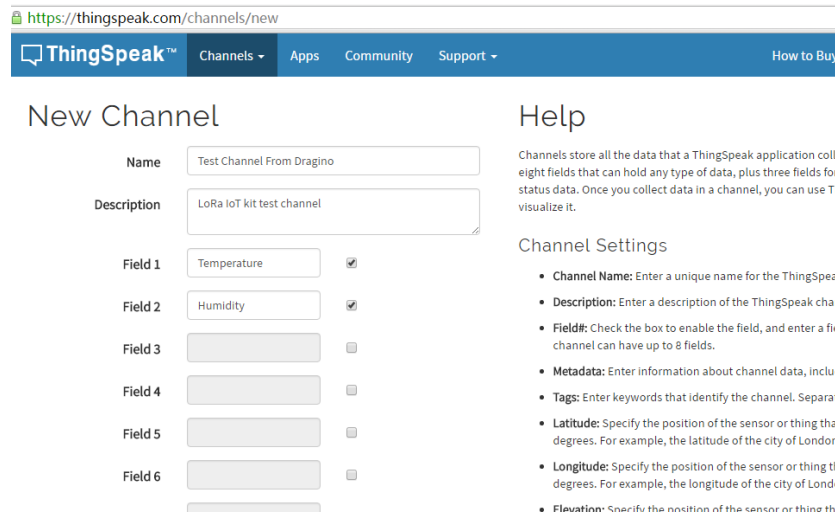
#### 9.1.1 Set up hardware

Set up the hardware as below, the LoRa node will get sensor data from DHT11 and send these data to LoRa Gateway, when the Gateway get the data, it will pass the data to the IoT server.



### 9.1.2 Set up IoT Server account

We choose [ThingSpeak](#) as the IoT server here, first sign up an account in ThingSpeak, then goto the Channels and create a Channel with Temperature and Humidity field.



After create the channel, user can see the **Channel ID** and **API key** in the Channel Page. They are needed for upgrade data to this channel.

### 9.1.3 Upload sketches

Step 1: Download the [ThingSpeak Library](#) and put it in the Arduino library directory.

Step 2: Select the example from:

**IDE --> File --> Examples --> Dragino --> IoTServer --> ThingSpeak --> dht11\_client**

And upload this sketch to the LoRa Node

Step 3: Select the example from

**IDE --> File --> Examples --> Dragino --> IoTServer --> ThingSpeak --> dht11\_server**

Replace the myChannelNumber & myWriteAPIKey to your info

And upload this sketch to the LoRa Gateway.

### 9.1.4 Check Result

Check Result in ThingSpeak as below

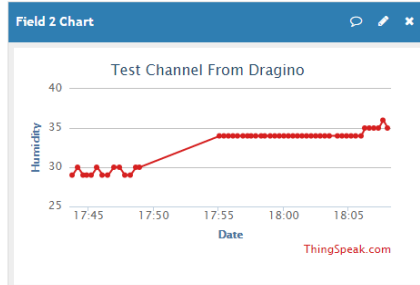
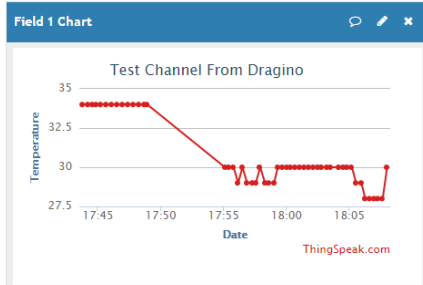
### Channel Stats

Created: [about 2 hours ago](#)

Updated: [16 minutes ago](#)

Last entry: [16 minutes ago](#)

Entries: 77



## 9.2 Downstream: Get data from IoT Server and send to LoRa node

### 9.2.1 Set up Hardware

Set up the hardware as below, the LoRa Gateway will get command from IoT Server and then send the command to LoRa node, the node control the relay state according to the receive command.



### 9.2.2 Set up talkback command

Create a talkback command in [ThingSpeak](https://thingspeak.com) Apps. We can then find the talkback ID and talkback API key here:

ThingSpeak™ Channels - Apps Community Support - How to Buy Account - Sign Out

Apps / TalkBack / TestTalkBack

Edit TalkBack

Name: TestTalkBack

TalkBack ID: 12095

API Key: VJ183E4E64GYML4Y

Regenerate API Key

Created: 2016-12-09 4:02 pm

Logged to Channel: Test Channel From Dragino

Position	Command ID	Command string
1	3371124	1

Position Command string Save

Help

Example API Endpoints

Add a TalkBack Command

```
POST https://api.thingspeak.com/talkbacks/12095/commands.json
api_key=VJ183E4E64GYML4Y
```

Get a TalkBack Command

```
GET https://api.thingspeak.com/talkbacks/12095/commands/1.json?api_key=VJ183E4E64GYML4Y
```

Update a TalkBack Command

```
PUT https://api.thingspeak.com/talkbacks/12095/commands/1.json
api_key=VJ183E4E64GYML4Y
```

Execute the Next TalkBack Command

```
POST https://api.thingspeak.com/talkbacks/12095/commands/execute.json
api_key=VJ183E4E64GYML4Y
```

Update a Channel and Execute the Next TalkBack Command

```
POST https://api.thingspeak.com/update.json
fields=0
api_key=8928R25QWEKIPY
talkback_key=VJ183E4E64GYML4Y
```

Get the Last Executed Command

```
GET https://api.thingspeak.com/talkbacks/12095/commands/last.json?api_key=VJ183E4E64GYML4Y
```

### 9.2.3 Upload sketches

Step 1: Select the example from:

**IDE --> File --> Examples --> Dragino --> IoTServer --> ThingSpeak --> DownstreamClient**

And upload this sketch to the LoRa Node

Step 2: Select the example from

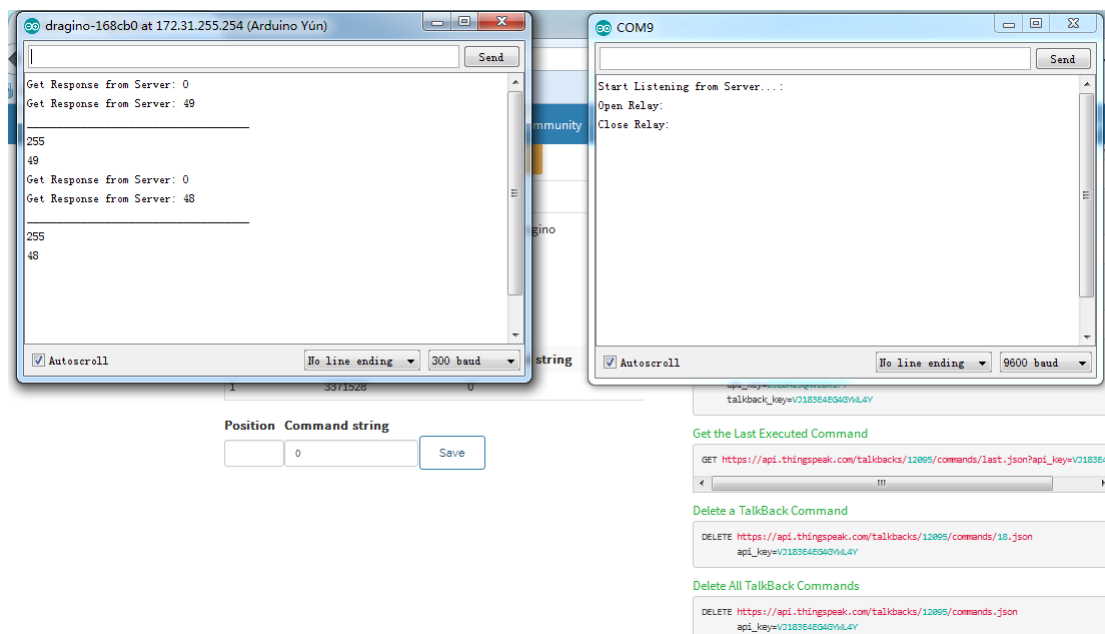
**IDE --> File --> Examples --> Dragino --> IoTServer --> ThingSpeak --> DownstreamServer**

Replace the talkback ID & talkbackAPIKey with your info

And upload this sketch to the LoRa Gateway.

### 9.2.4 Check Result

In the talkback APP page, send a command 1 or 0 to trigger the relay. You can see the result from the console.



### 9.3 Example for Connecting to TTN LoRaWAN server

Please check this link for detail : [Connect to TTN](#)

### 9.4 Multiple Nodes examples

The example shows how the gateway can handle multiple nodes up to several hundreds. The example can be found at [IDE --> File --> Examples --> Dragino --> LoRa --> Concurrent](#)

#### How it works:

This concurrent client sketch is working together with the concurrent gateway sketch. Before using this sketch, please use the `write_client_id` sketch to write a client ID in the EEPROM. Client ID is the unique id for each client in the LoRa network. `write_gateway_id` to gateway is not necessary, if not write, gateway id will be 0XFF.

- When the client boot, it will keep listening for the broadcast message from LoRa Gateway.
- When the gateway sketch boot, it will broadcast a message to set up a LoRa Network. If it gets broadcast message, client will send a join request message to gateway, when the join request message arrive to gateway, the gateway will send back a join-ack message with client id and add this client to the LoRa Network.
- If the client gets its join-ack message for its join request, it will enter the mode to listen the data-request message from gateway. In this mode, if client get a data-request message for this client it will send back a data message to the gateway.
- After client in `data_request` listening mode, if it has not receive any message from gateway in a timeout, it will go back to the network set up mode to listen the broadcast message.
- Gateway will refresh the LoRa network periodically for adding new client or remove unreachable client.

This example using the polling method between LoRa node and Gateway, it will minimize the LoRa packets transfer on the air and avoid congestion. It is suitable for a not real time LoRa work.

Performance test in a room with 100 nodes and 1 gateway shows:

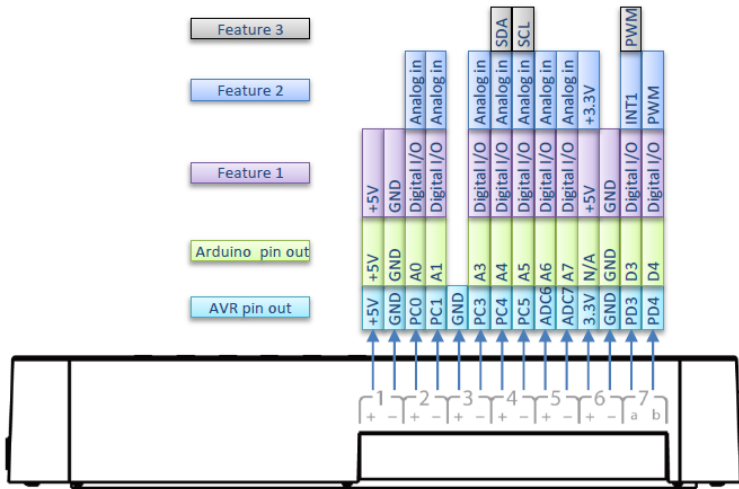
- a) Gateway require about 1.5 minutes to set up this 100 nodes Network
- b) Gateway takes about 2 minutes to do polling for these 100 nodes.

User can adjust the timing in the sketch from case by case.



### 9.5 How to use the sensor pin of LG01-S?

The LG01-S has the external sensor pins from the Mega328P MCU, it can connect to external sensor, below is the pin definition for LG01-S:

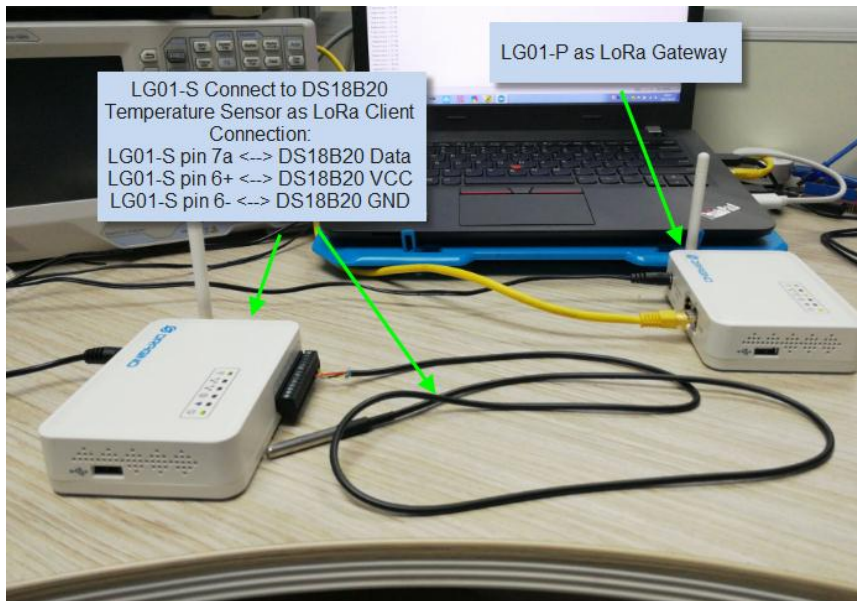


LG01-S Pinout

The program method for these pins are the same as Arduino, **what should notice is that the pins are 3.3v I/O base.**

Here is an example for how to use it with DS18B20 temperature sensor.

**Hardware Setup as below:**

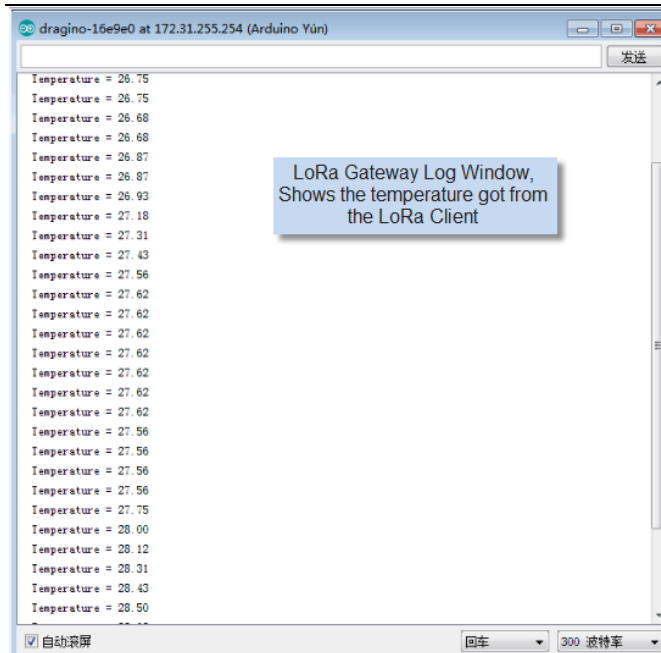


Source code is in this link:

- ✓ [Sensor and LoRa client side](#)
- ✓ [Gateway side](#)

Result screen shot:





## 9.6 More Examples

Dragino keep updating examples in our wiki, more examples please refer the link:

[Dragino Examples Catalog](#)

## 10 FAQ

### 10.1 Why there is 433/868/915 version LoRa part?

Different country has different rules for the ISM band for using the LoRa. Although the LoRa chip can support a wide range of Frequency, we provide different version for best tune in the LoRa part. That is why we provide different version of LoRa.

### 10.2 What is the frequency range of LG01 LoRa part?

The chip used in the LoRa part is:

Version	LoRa IC	Support Frequency	Best Tune Frequency
<b>433</b>	Semtech SX1278	Band2(LF): 410 ~525Mhz Band3(LF): 137 ~175Mhz	433Mhz
<b>868</b>	Semtech SX1276	Band1(HF): 862 ~1020Mhz	868Mhz
<b>915</b>	Semtech SX1276	Band1(HF): 862 ~1020Mhz	915Mhz

User can set the LoRa within above frequency range in the software.

### 10.3 What kind of LoRa devices can the gateway support?

The LoRa part software is running in the Mega328P MCU. And we use the Radiohead Library as examples. If other LoRa devices are running the same Radiohead library, same frequency and same encryption, they should be able to communicate with this gateway.

User can also run other LoRa protocol on the MCU to support other LoRa devices they want.

### 10.4 How many nodes can the LG01 support?

The maximum support end-node depends on how the communication (how often) between the end-nodes and gateway. In a lab testing using the [simple LoRa example](#), if the end nodes try to send data to the gateway at every 5 minutes, there will be data lost after the network has 20~30 nodes due to Channel Collision.

If user want to reach more nodes, user can consider using the polling method to ensure that each time will only have a LoRa signal transmit in the frequency. If the gateway uses polling method to get data from the end node, it can support several hundred nodes or more. Examples can see:

[Polling example for LoRa](#).

### 10.5 What kind of Server the LG01 can support?

The Linux side of LG01 is OpenWrt, it is open source and users can develop application over it.

Basically it can support most IoT servers if use the right API. We have examples for how to connect some servers via typical protocol (MQTT,RESTful) for IoT, MQTT or RESTful. From this link:

[IoT Server Examples](#).

### **10.6 Can I make my own firmware for LG01? Where can I find the source code of LG01?**

Yes, User can make own firmware for LG01 for branding purpose or add customized application.

The LG01 source code and compile instruction can be found at:

<https://github.com/dragino/openwrt-bb-1407>

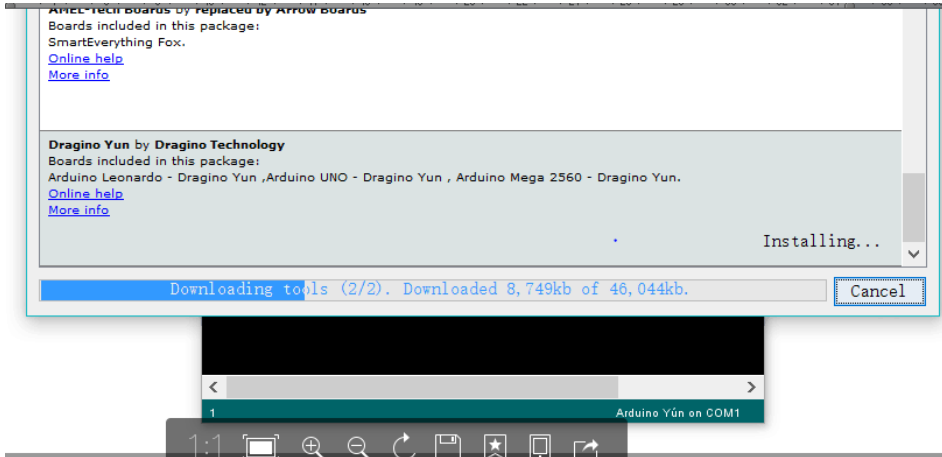
### **10.7 How to get more examples for this device?**

We keep releasing Arduino Examples in the Dragino examples directory under Arduino IDE. If user install the dragino board earlier and we have release new examples. The new ones won't show up in the IDE except the user update the board profile. To update, User can remove the board profile in Arduino board manager and install it again.

## 11 Trouble Shooting

### 11.1 I can't download the Dragino profile in Arduino IDE.

If IDE quite slowly while downloading the Dragino profile in board manager and stuck somewhere. As show below, it is because your network has slow connection to some packages from Arduino IDE.



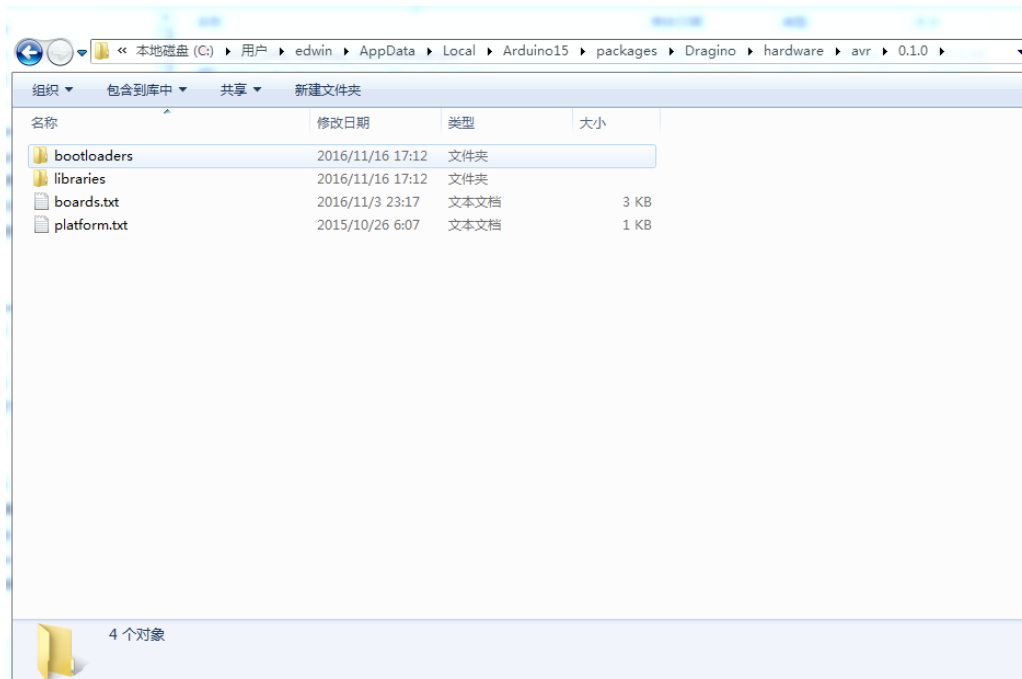
To solve this, user can manually add Dragino profile. Below is the step:

- 1/ Download the profile from <https://github.com/dragino/Arduino-Profile-Examples>
- 2/ Unzip it and put the content under this directory:

**C:\Users\xxx\AppData\Local\Arduino15\packages\Dragino\hardware\avr\0.1.0**

Note: Different system may have different directory for Arduino15, if you can't see Dragino\hardware\avr\0.1.0, just create it in your Arduino15 directory.

The final directory content should as below.



## 11.2 Bridge between MCU and Linux module doesn't work.

Some possibilities:

1/ You have used the **Serial class** in MCU sketch, like `Serial.begin(9600)`, The bridge library in Mega328P use the same Serial interface. So if you have the Serial code in the sketch. They will conflict and bridge doesn't work.

2/ The IDE get mess in the serial setting when you compile other sketch . In this case, you can close the IDE and open it again.

## 11.3 Arduino IDE doesn't detect LG01

Check below points if this issue happens:

- ✓ The Arduino IDE version is 1.5.4 or later
- ✓ Your PC and Yun LG01 are in the same network.
- ✓ Try to access the LG01 via Web or SSH, then check the IDE again.
- ✓ If above still doesn't work, SSH log in the LG01 and run: `/etc/init.d/avahi-daemon restart` to restart the service so IDE can detect the LG01.

## 11.4 I get kernel error when install new package, how to fix?

In some case, when install package, it will generate kernel error such as below:

```
root@dragino-16c538:~# opkg install kmod-dragino2-si3217x_3.10.49+0.2-1_ar71xx.ipk
```

```
Installing kmod-dragino2-si3217x (3.10.49+0.2-1) to root...
```

```
Collected errors:
```

```
* satisfy_dependencies_for: Cannot satisfy the following dependencies for
```

```
kmod-dragino2-si3217x:
```

```
* kernel (= 3.10.49-1-4917516478a753314254643facdf360a) *
```

```
* opkg_install_cmd: Cannot install package kmod-dragino2-si3217x.
```

In this case, user can use the `--force-depends` option to install such package.

```
opkg install kmod-dragino2-si3217x_3.10.49+0.2-1_ar71xx.ipk --force-depends
```

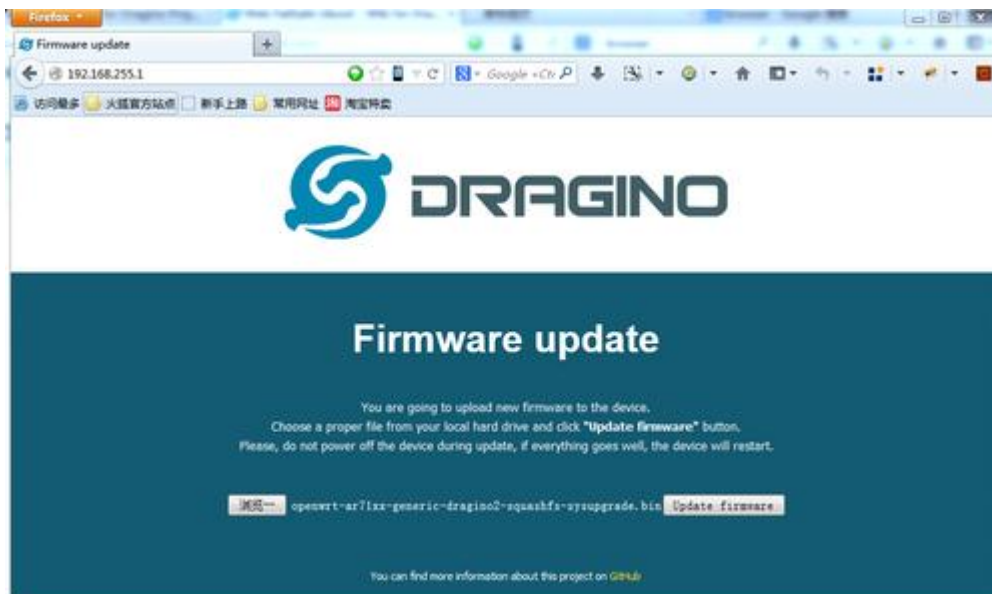
## 11.5 How to recover the LG01 if firmware crash

LG01 provide user a full control on its Linux system, it is possible that the device will brick and can't boot after improper modification in some booting files.

In this case, user can recover the whole Linux system by uploading a new firmware via Web Failsafe mode.

Procedure is as below:

- Use a RJ45 cable to connect the PC to LG01's port directly.
- Set the PC to ip 192.168.255.x, netmask 255.255.255.0
- Pressing the toggle button and power on the device
- All LEDs of the device will blink, release the toggle button after four blinks
- All LEDs will then blink very fast once, this means device detect a network connection and enter into the web-failsafe mode. Your PC should be able to ping 192.168.255.1 after device enter this mode.
- Open 192.168.255.1 in web browser
- Select a squashfs-sysupgrade type firmware and update firmware.



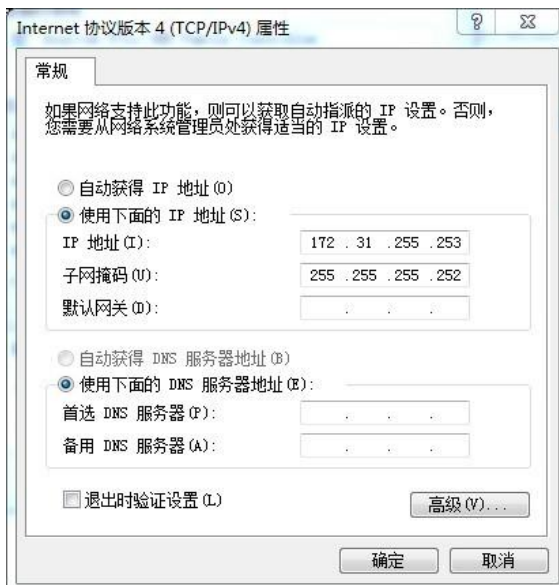
## 11.6 I configured LG01 for WiFi access and lost its IP. What to do now?

The LG01 has a fall-back ip in its LAN port. this IP is always enable so user can use fall back ip to access LG01 no matter what the WiFi IP is. The fall back ip is useful for connect and debug the unit.

Steps to connect via fall back IP:

1. Connect PC's Ethernet port to LG01's LAN port
2. Configure PC's Ethernet port has IP: 172.32.255.253 and netmask: 255.255.255.252

As below photo:



3. In PC, use 172.31.255.254 to access LG01 via Web or Console.



## 12 Order Info

### General Version:

- **LG01P-433**: LoRa Gateway best tune to 433 MHz.
- **LG01P-868**: LoRa Gateway best tuned to 868 MHz.
- **LG01P-915**: LoRa Gateway best tuned to 915 MHz

### Screw Terminal Version:

- **LG01S-433**: LoRa Gateway best tune to 433 MHz.
- **LG01S-868**: LoRa Gateway best tuned to 868 MHz.
- **LG01S-915**: LoRa Gateway best tuned to 915 MHz.

### Outdoor Version:

- **OLG01-433**: LoRa Gateway best tune to 433 MHz.
- **OLG01-868**: LoRa Gateway best tuned to 868 MHz.
- **OLG01-915**: LoRa Gateway best tuned to 915 MHz.

## 13 Packing Info

### Package Includes:

- ✓ LG01P or LG01S LoRa Gateway x 1
- ✓ Stick Antenna for LoRa RF part. Frequency is one of 433 or 868 or 915Mhz depends the model ordered
- ✓ Power Adapter: EU/AU/US type power adapter depends on country to be used
- ✓ Packaging with environmental protection paper box

### Dimension and weight:

- ✓ Device Size: 12 x 8.5 x 3 cm
- ✓ Device Weight: 150g
- ✓ Package Size / pcs : 21.5 x 10 x 5 cm
- ✓ Weight / pcs : 360g
- ✓ Carton dimension: 45 x 31 x 34 cm. 36pcs per carton
- ✓ Weight / carton : 12.5 kg

## 14 Support

- Try to see if your questions already answered in the [wiki](#).
- Support is provided Monday to Friday, from 09:00 to 18:00 GMT+8. Due to different timezones we cannot offer live support. However, your questions will be answered as soon as possible in the before-mentioned schedule.
- Provide as much information as possible regarding your enquiry (product models, accurately describe your problem and steps to replicate it etc) and send a mail to

[support@dragino.com](mailto:support@dragino.com)



## 15 Reference

- ✧ LG01 LoRa Gateway official wiki
  
- ✧ [More examples for LG01 LoRa Gateway](#)
  
- ✧ Source code for LG01 LoRa Gateway  
<https://github.com/dragino/openwrt-bb-1407>
  
- ✧ OpenWrt official Wiki  
<http://www.openwrt.org/>
  
- ✧ Arduino Official Site:  
<https://www.arduino.cc>
  
- ✧ Arduino bridge examples:  
<https://www.arduino.cc/en/Tutorial/Bridge>