



Dragino LHT65 AT Command Sets

Version	Describe	Author	Time
V1.0	Release	Dragino	2019-06-26

1	Introduction	4
1.1	How to connect device and send AT command?	4
2	General Command	6
2.1	AT: Attention	6
2.2	AT?: Short Help	6
2.3	ATZ: MCU Reset	6
2.4	AT+FDR: Factory Data Reset	6
2.5	AT+VER: Image Version and Frequency Band.....	7
2.6	AT+CFG: Print all configurations	7
2.7	AT+TDC: Application Data Transmission Interval.....	8
3	Keys, IDs and EUIs management.....	8
3.1	AT+APPEUI: Application EUI	8
3.2	AT+APPKEY: Application Key	8
3.3	AT+APPSKEY: Application Session Key	9
3.4	AT+DADDR: Device Address.....	9
3.5	AT+DEUI: Device EUI.....	10
3.6	AT+NWKID: Network ID(You can enter this command change only after successful network connection)	10
3.7	AT+NWKSKEY: Network Session Key.....	10
4	Joining and sending data on LoRa® network	11
4.1	AT+CFM: Confirm Mode	11
4.2	AT+CFS: Confirm Status	11
4.3	AT+JOIN: Join LoRa® Network	12
4.4	AT+NJM: LoRa® Network Join Mode	12
4.5	AT+NJS: LoRa® Network Join Status	12
4.6	AT+RECV: Print Last Received Data in Raw Format	13
4.7	AT+RECVB: Print Last Received Data in Binary Format.....	13
4.8	AT+SEND: Send Text Data	13
4.9	AT+SENB: Send Hexadecimal Data	14
5	LoRa® network management.....	14
5.1	AT+ADR: Adaptive Rate	14
5.2	AT+CLASS: LoRa® Class(Currently only support class A, class C)	14
5.3	AT+DCS: Duty Cycle Setting	15
5.4	AT+DR: Data Rate (Can Only be Modified after ADR=0).....	15
5.5	AT+FCD: Frame Counter Downlink	16
5.6	AT+FCU: Frame Counter Uplink	16
5.7	AT+JN1DL: Join Accept Delay1.....	17
5.8	AT+JN2DL: Join Accept Delay2.....	17
5.9	AT+PNM: Public Network Mode.....	17
5.10	AT+RX1DL: Receive Delay1	18

5.11	AT+RX2DL: Receive Delay2	18
5.12	AT+RX2DR: Rx2 Window Data Rate	19
5.13	AT+RX2FQ: Rx2 Window Frequency	19
5.14	AT+TXP: Transmit Power	20
5.15	AT+RSSI: RSSI of the Last Received Packet.....	20
5.16	AT+SNR: SNR of the Last Received Packet	20
5.17	AT+PORT: Application Port	21
5.18	AT+ CHS: Single Channel Mode	21
5.19	AT+ CHE: Eight Channel Mode.....	21
5.20	AT+DISAT: Disable AT commands.....	23
5.21	AT+PASSWORD: Set password.....	23
5.22	AT+DATE: Get or Set real time	23
5.23	AT+PDTA: Print the sector data from start page to stop page.....	23
5.24	AT+PLDTA: Print the last few sets of data.....	24
5.25	AT+CLRDTA: Clear the storage, record position back to 1st	25
5.26	AT+SLEEP: Set sleep mode.....	25
5.27	AT+EXT: Get or Set external sensor model	25
5.28	AT+RTP: Get or Set record time period in min	26

1 Introduction

This article describes the AT Commands Set for Dragino LHT65 Humidity and Temperature sensor.

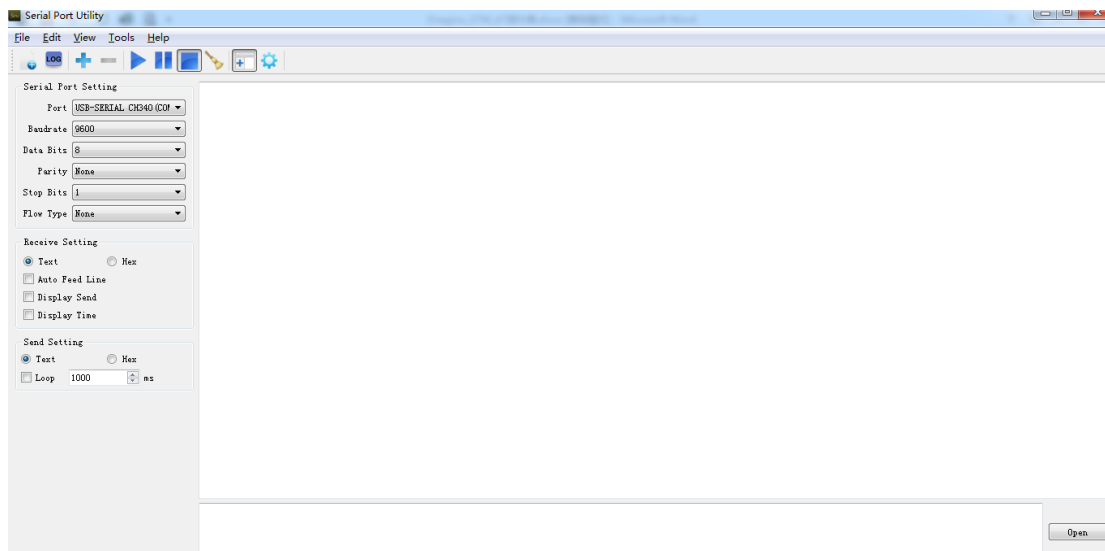
1.1 How to connect device and send AT command?

Software Setting:

An USB-TTL can be used with standard windows software such as Serial Port Utility. The chosen software should be configured with the following parameters:

- Baud rate: 9600
- Data: 8 bit
- Parity: none
- Stop: 1 bit
- Flow type: none

Figure 1 show the standard configuration for Serial Port Utility to use USB-TTL.



All the AT commands have a standard format as “AT+XXX”, with XXX denoting the command.

There are four available command behaviors:

- **AT+XXX?** provides a short help of the given command, for example **AT?**
- **AT+XXX** is used to run a command, such as **AT+JOIN**
- **AT+XXX=?** is used to get the value of a given command, for example **AT+TDC=?**
- **AT+XXX=<value>** is used to provide a value to a command, for example

AT+SENDB=12:12a0ff

The output of the commands is provided on the UART. The output format is as below:

```
<value><CR><LF>
<CR><LF><Status>
```

Note: <CR> stands for “carriage return” and <LF> stands for “line feed”

The <value><CR><LF> output is returned whenever the “help AT+XXX?” or the “get AT+XXX=?” commands are run.

When no value is returned, the <value><CR><LF> output is not returned at all.

Every command (except for ATZ used for MCU reset) returns a status string, which is preceded and followed by <CR><LF> in a “<CR><LF><Status>” format. The possible status are:

- OK: command run correctly without error.
- AT_ERROR: generic error
- AT_PARAM_ERROR: a parameter of the command is wrong
- AT_BUSY_ERROR: the LoRa® network is busy, so the command could not completed
- AT_TEST_PARAM_OVERFLOW: the parameter is too long
- AT_NO_NETWORK_JOINED: the LoRa® network has not been joined yet
- AT_RX_ERROR: error detection during the reception of the command

More details on each command description and examples are described in the next part of this section. Note that each command preceded by # is the one provided by the host to the module. Then the return of the module is printed.

2 General Command

2.1 AT: Attention

AT: Attention	
Test Command: AT	Response: OK

2.2 AT?: Short Help

AT?: Short Help	
Test Command: AT?	Response: AT+<CMD>?:help on <CMD> AT+<CMD>:run <CMD> AT+<CMD>=<value>:set the value AT+<CMD>=? :get the value <followed by the help of all commands> OK

2.3 ATZ: MCU Reset

ATZ: MCU Reset	
Test Command: ATZ?	Response: ATZ: Trig a reset of the MCU OK
Test Command: ATZ	Response: LHT65 Image Version: XX Frequency Band: XX DevEui= XX XX XX XX XX XX XX XX <followed by the Tx and Rx information>

2.4 AT+FDR: Factory Data Reset

AT+FDR: Factory Data Reset	
Test Command:	Response:

AT+FDR	LHT65 Image Version: XX Frequency Band: XX DevEui= XX XX XX XX XX XX XX XX Please set the parameters or reset Device to apply change
Test Command: AT+FDR?	Response: AT+FDR: Reset Parameters to Factory Default, Keys Reserve OK

2.5 AT+VER: Image Version and Frequency Band

AT+VER: Image Version and Frequency Band	
Test Command: AT+VER=?	Response: 1.3 EU868 OK
Test Command: AT+VER?	Response: AT+VER: Get current image version and Frequency Band OK

2.6 AT+CFG: Print all configurations

AT+CFG: Print all configurations	
Test Command: AT+CFG	Response: AT+DEUI = XX XX XX XX XX XX XX XX AT+DADDR=XXXXXXXX AT+RX2WTO=X AT+CHS=868100000 OK

2.7 AT+TDC: Application Data Transmission Interval

AT+TDC: Application Data Transmission Interval < The default TDC is 30000 ms >	
Test Command: AT+TDC?	Response: AT+TDC: Get or set the application data transmission interval in ms OK
AT+TDC=?	Response: 30000 OK
AT+TDC=60000	Response: OK

3 Keys, IDs and EUIs management

3.1 AT+APPEUI: Application EUI

AT+APPEUI: Application EUI <8 hex separated by >	
Test Command: AT+APPEUI?	Response: AT+APPEUI: Get or Set the Application EUI OK
Test Command: AT+APPEUI=?	Response: 00 b3 d5 7e f0 00 4d 34 OK
Test Command: AT+APPEUI=01 30 48 23 54 76 53 CD	Response: OK

3.2 AT+APPKEY: Application Key

AT+APPKEY: Application Key <16 hex separated by >	
Test Command: AT+APPKEY?	Response: AT+APPKEY: Get or Set the Application Key OK
Test Command: AT+APPKEY=?	Response: 00 35 55 55 22 23 55 53 43 24 23 42 34 35 35 35

	OK
Test Command: AT+APPKEY=00 35 55 55 22 23 55 53 43 24 23 42 34 35 35 35	Response: OK

3.3 AT+APPSKEY: Application Session Key

AT+APPSKEY: Application Session Key <16 hex separated by >	
Test Command: AT+APPSKEY?	Response: AT+APPSKEY: Get or Set the Application Session Key OK
Test Command: AT+APPSKEY=?	Response: 00 7d dc 73 33 d3 eb 9e 14 38 d5 a4 3e 62 5b e2 OK
Test Command: AT+APPSKEY=00 7d dc 73 33 d3 eb 9e 14 38 d5 a4 3e 62 5b e2	Response:(While Error in format, return AT_PARAM_ERROR) OK

3.4 AT+DADDR: Device Address

AT+DADDR: Device Address <4 hex digit separate by >	
Test Command: AT+DADDR?	Response: AT+DADDR: Get or Set the Device Address OK
Test Command: AT+DADDR=?	Response: (While Error in format, return AT_PARAM_ERROR) A8 40 41 FF OK
Test Command: AT+DADDR=A8 40 41 FF	Response: OK

3.5 AT+DEUI: Device EUI

AT+DEUI: Device EUI<8 hex separated by:>	
Test Command: AT+DEUI?	Response: AT+DEUI: Get or Set the Device EUI OK
Test Command: AT+DEUI=?	Response: 00 44 34 22 33 45 55 55 OK
Test Command: AT+DEUI=A8 40 41 FF FF 12 34 56	Response:(System will write new value to Device EUI ,While Error in format, return AT_PARAM_ERROR) OK

3.6 AT+NWKID: Network ID(You can enter this command change only after successful network connection)

AT+NWKID: Network ID<4 hex separated by:>	
Test Command: AT+NWKID?	Response: AT+NWKID: Get or Set the Network ID OK
Test Command: AT+NWKID=?	Response: a8 40 41 ff OK
Test Command: AT+NWKID=A8 40 41 FF	Response: OK

3.7 AT+NWKSKEY: Network Session Key

AT+NWKSKEY: Network Session Key<16 hex separated by:>	
Test Command: AT+NWKSKEY?	Response: AT+NWKSKEY: Get or Set the Network Session Key OK
Test Command: AT+NWKSKEY=?	Response: 00 4f 19 25 52 ce 97 09 d7 fa 84 71 db 51 02 92

	OK
Test Command: AT+NWKEY=A8 40 41 FF FF 12 34 56 00 01 02 04 05 06 06 07	Response: OK

4 Joining and sending data on LoRa® network

4.1 AT+CFM: Confirm Mode

AT+CFM: Confirm Mode	
Test Command: AT+CFM?	Response: AT+CFM: Get or Set the confirmation mode (0-1) OK
Test Command: AT+CFM=?	Response: 0 OK
Test Command: AT+CFM=1	Response: OK
Test Command: AT+CFM=2	While Error in format, return AT_PARAM_ERROR

4.2 AT+CFS: Confirm Status

AT+ CFS: Confirm Status	
Test Command: AT+CFS?	Response: AT+CFS: Get confirmation status of the last AT+SEND (0-1) OK
Test Command: AT+CFS=?	Response: 0 OK

4.3 AT+JOIN: Join LoRa® Network

AT+ JOIN: Join LoRa® Network	
Test Command: AT+JOIN	Response: OK
Test Command: AT+ JOIN?	Response: AT+JOIN: Join network OK
	While Error in format, return AT_BUSY_ERROR

4.4 AT+NJM: LoRa® Network Join Mode

AT+ NJM: LoRa® Network Join Mode	
Test Command: AT+NJM=?	Response: 1 OK
Test Command: AT+NJM?	Response: AT+NJM: Get or Set the Network Join Mode. (0: ABP, 1: OTAA) OK
Test Command: AT+NJM=0	Response: OK
Test Command: AT+NJM=2	While Error in format, return AT_PARAM_ERROR

4.5 AT+NJS: LoRa® Network Join Status

AT+ NJS: LoRa® Network Join Status	
Test Command: AT+NJS=?	Response: 0 OK
Test Command: AT+NJS?	Response: AT+NJS: Get the join status OK

4.6 AT+RECV: Print Last Received Data in Raw Format

AT+ RECV: Print Last Received Data in Raw Format<port:data>	
Test Command: AT+RECV=?	Response: 0: OK
Test Command: AT+RECV?	Response: AT+RECV: print last received data in raw format OK

4.7 AT+RECVB: Print Last Received Data in Binary Format

AT+ RECVB: Print Last Received Data in Binary Format<port:data>	
Test Command: AT+RECVB=?	Response: 2: 0010 OK
Test Command: AT+RECVB?	Response: AT+RECVB: print last received data in binary format (with hexadecimal values) OK

4.8 AT+SEND: Send Text Data

AT+ SEND: Send Text Data<port:data>	
Test Command: AT+SEND?	Response: AT+SEND: Send text data along with the application port OK
Test Command: AT+SEND=12:hello world	Response: OK
	While Error in format, return AT_BUSY_ERROR/AT_BUSY_ERROR/AT_NO_NETWORK_JOINED

4.9 AT+SENB: Send Hexadecimal Data

AT+SENB: Send Hexadecimal Data<port:data>	
Test Command: AT+SENB?	Response: AT+SENB: Send hexadecimal data along with the application port OK
Test Command: AT+SENB=12:abcdef0123456789	Response: OK
Test Command: AT+SENB=abcdef0123456789	While Error in format, return AT_PARAM_ERROR AT_BUSY_ERROR/AT_NO_NETWORK_JOINED

5 LoRa® network management

5.1 AT+ADR: Adaptive Rate

AT+ ADR: Adaptive Rate	
Test Command: AT+ADR=?	Response: 1 OK
Test Command: AT+ADR?	Response: AT+ADR: Get or Set the Adaptive Data Rate setting. (0: off, 1: on) OK
Test Command: AT+ADR=0	Response: OK
	While Error in format, return AT_PARAM_ERROR

5.2 AT+CLASS: LoRa® Class(Currently only support class A, class C)

AT+ CLASS: LoRa® Class	
Test Command: AT+CLASS=?	Response: A OK

Test Command: AT+CLASS?	Response: AT+CLASS: Get or Set the Device Class OK
Test Command: AT+CLASS=C	Response: OK
	While Error in format, return AT_PARAM_ERROR

5.3 AT+DCS: Duty Cycle Setting

AT+ DCS: Duty Cycle Setting	
Test Command: AT+DCS?	Response: AT+DCS: Get or Set the ETSI Duty Cycle setting - 0=disable, 1=enable - Only for testing OK
Test Command: AT+DCS=?	Response: 1 OK
Test Command: AT+DCS=1	Response: OK
	While Error in format, return AT_PARAM_ERROR

5.4 AT+DR: Data Rate (Can Only be Modified after ADR=0)

AT+DR: Data Rate	
Test Command: AT+DR=?	Response: 5 OK
Test Command: AT+DR?	Response: Get or Set the Data Rate. (0-7 corresponding to DR_X) OK
Test Command: AT+DR=2	Response:

	OK
	While Error in format, return AT_PARAM_ERROR

5.5 AT+FCD: Frame Counter Downlink

AT+ FCD: Frame Counter Downlink	
Test Command: AT+FCD=?	Response: 0 OK
Test Command: AT+FCD?	Response: AT+FCD: Get or Set the Frame Counter Downlink OK
Test Command: AT+FCD=10	Response:(System will write new value to FCD) OK
	While Error in format, return AT_PARAM_ERROR

5.6 AT+FCU: Frame Counter Uplink

AT+ FCU: Frame Counter Uplink	
Test Command: AT+FCU=?	Response: 0 OK
Test Command: AT+FCU?	Response: AT+FCU: Get or Set the Frame Counter Uplink OK
Test Command: AT+FCU=10	Response: OK
Test Command: AT+ FCU=10.1	Response: While Error in format, return AT_PARAM_ERROR

5.7 AT+JN1DL: Join Accept Delay1

AT+ JN1DL: Join Accept Delay1	
Test Command: AT+JN1DL=?	Response: 5000 OK
Test Command: AT+JN1DL?	Response: AT+JN1DL: Get or Set the Join Accept Delay between the end of the Tx and the Join Rx Window 1 in ms OK
Test Command: AT+JN1DL=10000	Response: OK
	While Error in format, return AT_PARAM_ERROR/AT_BUSY_ERROR

5.8 AT+JN2DL: Join Accept Delay2

AT+ JN2DL: Join Accept Delay2	
Test Command: AT+JN2DL=?	Response: 6000 OK
Test Command: AT+JN2DL?	Response: AT+JN2DL: Get or Set the Join Accept Delay between the end of the Tx and the Join Rx Window 2 in ms OK
Test Command: AT+JN2DL=20000	Response: OK
	While Error in format, return AT_PARAM_ERROR/AT_BUSY_ERROR

5.9 AT+PNM: Public Network Mode

AT+ PNM: Public Network Mode	
Test Command: AT+PNM=?	Response: 1

	OK
Test Command: AT+PNM?	Response: AT+PNM: Get or Set the public network mode. (0: off, 1: on) OK
Test Command: AT+PNM=1	Response:(System will write new value to PNM) OK
	While Error in format, return AT_PARAM_ERROR/AT_BUSY_ERROR

5.10 AT+RX1DL: Receive Delay1

AT+ RX1DL: Receive Delay1	
Test Command: AT+RX1DL=?	Response: 1000 OK
Test Command: AT+RX1DL?	Response: AT+RX1DL: Get or Set the delay between the end of the Tx and the Rx Window 1 in ms OK
Test Command: AT+RX1DL=1500	Response: OK
	While Error in format, return AT_BUSY_ERROR/AT_PARAM_ERROR

5.11 AT+RX2DL: Receive Delay2

AT+ RX2DL: Receive Delay2	
Test Command: AT+RX2DL=?	Response: 2000 OK
Test Command: AT+RX2DL?	Response: AT+RX2DL: Get or Set the delay between the end of the Tx and the Rx Window 2 in ms

	OK
Test Command: AT+RX2DL=2500	Response: OK
	While Error in format, return AT_BUSY_ERROR/AT_PARAM_ERROR

5.12 AT+RX2DR: Rx2 Window Data Rate

AT+ RX2DR: Rx2 Window Data Rate	
Test Command: AT+RX2DR=?	Response: OK
Test Command: AT+RX2DR?	Response: AT+RX2DR: Get or Set the Rx2 window data rate (0-7 corresponding to DR_X) OK
Test Command: AT+RX2DR=6	Response: OK
	Response: While Error in format, return AT_PARAM_ERROR

5.13 AT+RX2FQ: Rx2 Window Frequency

AT+ RX2FQ: Rx2 Window Frequency	
Test Command: AT+RX2FQ=?	Response: 434665000 OK
Test Command: AT+RX2FQ?	Response: AT+RX2FQ: Get or Set the Rx2 window frequency OK
Test Command: AT+RX2FQ=434665000	Response: OK
	While Error in format, return AT_BUSY_ERROR / AT_BUSY_ERROR

5.14 AT+TXP: Transmit Power

AT+ TXP: Transmit Power	
Test Command: AT+TXP=?	Response: 0 OK
Test Command: AT+TXP?	Response: AT+TXP: Get or Set the Transmit Power (0-5, MAX:0, MIN:5, according to LoRaWAN Spec) OK
Test Command: AT+ TXP=1	Response: OK
	While Error in format, return AT_PARAM_ERROR

5.15 AT+RSSI: RSSI of the Last Received Packet

AT+ RSSI: RSSI of the Last Received Packet	
Test Command: AT+RSSI=?	Response: 0 OK
Test Command: AT+RSSI?	Response: AT+RSSI: Get the RSSI of the last received packet OK

5.16 AT+SNR: SNR of the Last Received Packet

AT+ SNR: SNR of the Last Received Packet	
Test Command: AT+SNR=?	Response: 0 OK
Test Command: AT+SNR?	Response: AT+SNR: Get the SNR of the last received packet OK

5.17 AT+PORT: Application Port

AT+PORT: Application Port	
Test Command: AT+PORT=21	Response: OK
Test Command: AT+PORT?	Response: AT+PORT: Get or set the application port OK
Test Command: AT+PORT=?	Response: 21 OK

5.18 AT+ CHS: Single Channel Mode

AT+ CHS: Single Channel Mode	
Test Command: AT+ CHS =?	Response: 0 OK
Test Command: AT+ CHS?	Response: AT+CHS: Get or Set Frequency (Unit: Hz) for Single Channel Mode OK
Test Command: AT+ CHS =868100000	Response: OK

5.19 AT+ CHE: Eight Channel Mode

AT+ CHE: Eight Channel Mode	
Test Command: AT+ CHE =?	Response: 1 902.3 902.5 902.7 902.9 903.1 903.3 903.5 903.7 OK
Test Command: AT+ CHE?	Response: AT+CHE: Get or Set eight channels mode,Only for US915,AU915,CN470

	OK
Test Command: AT+ CHE =1	Response: OK

CHE	CN470 Uplink Channels(125KHz,4/5,Unit:MHz,CHS=0)								
0	ENABLE Channel 80-95								
1	486.3	486.5	486.7	486.9	487.1	487.3	487.5	487.7	Channel 80-87
2	487.9	488.1	488.3	488.5	488.7	488.9	489.1	489.3	Channel 88-95

CHE	US915 Uplink Channels(125KHz,4/5,Unit:MHz,CHS=0)								
0	ENABLE Channel 0-63								
1	902.3	902.5	902.7	902.9	903.1	903.3	903.5	903.7	Channel 0-7
2	903.9	904.1	904.3	904.5	904.7	904.9	905.1	905.3	Channel 8-15
3	905.5	905.7	905.9	906.1	906.3	906.5	906.7	906.9	Channel 16-23
4	907.1	907.3	907.5	907.7	907.9	908.1	908.3	908.5	Channel 24-31
5	908.7	908.9	909.1	909.3	909.5	909.7	909.9	910.1	Channel 32-39
6	910.3	910.5	910.7	910.9	911.1	911.3	911.5	911.7	Channel 40-47
7	911.9	912.1	912.3	912.5	912.7	912.9	913.1	913.3	Channel 48-55
8	913.5	913.7	913.9	914.1	914.3	914.5	914.7	914.9	Channel 56-63

CHE	AU915 Uplink Channels(125KHz,4/5,Unit:MHz, CHS=0)								
0	ENABLE Channel 0-63								
1	915.2	915.4	915.6	915.8	916	916.2	916.4	916.6	Channel 0-7
2	916.8	917	917.2	917.4	917.6	917.8	918	918.2	Channel 8-15
3	918.4	918.6	918.8	919	919.2	919.4	919.6	919.8	Channel 16-23
4	920	920.2	920.4	920.6	920.8	921	921.2	921.4	Channel 24-31
5	921.6	921.8	922	922.2	922.4	922.6	922.8	923	Channel 32-39
6	923.2	923.4	923.6	923.8	924	924.2	924.4	924.6	Channel 40-47
7	924.8	925	925.2	925.4	925.6	925.8	926	926.2	Channel 48-55
8	926.4	926.6	926.8	927	927.2	927.4	927.6	927.8	Channel 56-63

5.20 AT+DISAT: Disable AT commands

AT+DISAT: Disable AT commands(Must input password again before use AT commands)	
Test Command: AT+ DISAT?	Response: Disable AT commands OK
Test Command: AT+ DISAT	Response: OK

5.21 AT+PASSWORD: Set password

AT+PASSWORD: Set password (Enable AT Commands in five minutes after input correct password)	
Test Command: AT+ PASSWORD=?	Response: 123456 OK
Test Command: AT+ PASSWORD?	Response: Set password, max 9 digits OK
Test Command: AT+ PASSWORD=888888	Response: OK

5.22 AT+DATE: Get or Set real time

AT+DATE: Get or Set real time(Format:year month day hour minute second)	
Test Command: AT+ DATE=?	Response: 19/6/26 14:09:22 OK
Test Command: AT+ DATE?	Response: Get or Set real time OK
Test Command: AT+ DATE= 19 6 26 14 11 30	Response: OK

5.23 AT+PDPTA: Print the sector data from start page to stop page

AT+PDTA: Print the sector data from start page to stop page(max is 400 pages)	
Test Command: AT+ PDTA?	Response: Print the sector data from start page to stop page OK
Test Command: AT+ PDTA=1,3	Response: 8019500 19/6/26 16:48 1 2992 sht_temp=28.21 sht_hum=71.5 ds_temp=27.31 8019510 19/6/26 16:53 1 2994 sht_temp=27.64 sht_hum=69.3 ds_temp=26.93 8019520 19/6/26 16:58 1 2996 sht_temp=28.39 sht_hum=72.0 ds_temp=27.06 8019530 19/6/26 17:03 1 2996 sht_temp=27.97 sht_hum=70.4 ds_temp=27.12 8019540 19/6/26 17:08 1 2996 sht_temp=27.80 sht_hum=72.9 ds_temp=27.06 8019550 19/6/26 17:13 1 2998 sht_temp=27.30 sht_hum=72.4 ds_temp=26.68 8019560 19/6/26 17:22 1 2992 sht_temp=26.27 sht_hum=62.3 ds_temp=26.56 8019570 8019580 8019590 80195A0 80195B0 80195C0 80195D0 80195E0 80195F0 OK

5.24 AT+PLDTA: Print the last few sets of data

AT+PLDTA: Print the last few sets of data(max is 3200 group data)	
Test Command: AT+ PLDTA?	Response: Print the last few sets of data OK
Test Command: AT+ PLDTA=5	Response: Stop Tx and RTP events when read sensor data

	<p>1 19/6/26 13:59 1 3005 sht_temp=27.09 sht_hum=79.5 ds_temp=26.75</p> <p>2 19/6/26 14:04 1 3007 sht_temp=26.65 sht_hum=74.8 ds_temp=26.43</p> <p>3 19/6/26 14:09 1 3007 sht_temp=26.91 sht_hum=77.9 ds_temp=26.56</p> <p>4 19/6/26 14:15 1 3007 sht_temp=26.93 sht_hum=76.7 ds_temp=26.75</p> <p>5 19/6/26 14:20 1 3007 sht_temp=26.78 sht_hum=76.6 ds_temp=26.43</p> <p>Start Tx and RTP events</p> <p>OK</p>
--	--

5.25 AT+CLRDTA: Clear the storage, record position back to 1st

AT+CLRDTA: Clear the storage, record position back to 1st	
Test Command: AT+ CLRDTA?	Response: Clear the storage, record position back to 1st OK
Test Command: AT+ CLRDTA	Response: Clear all stored sensor data... OK

5.26 AT+SLEEP: Set sleep mode

AT+SLEEP: Set sleep mode(1:Enable,0:Disable)	
Test Command: AT+ SLEEP=?	Response: 1 OK
Test Command: AT+ SLEEP?	Response: Set sleep mode OK
Test Command: AT+ SLEEP	Response: OK

5.27 AT+EXT: Get or Set external sensor model

AT+EXT: Get or Set external sensor model(0: no external sensor,1: temperature sensor)	
Test Command:	Response:

AT+ EXT=?	1 OK
Test Command: AT+ EXT?	Response: Get or Set external sensor model OK
Test Command: AT+ EXT=0	Response: OK

5.28 AT+RTP: Get or Set record time period in min

AT+RTP: Get or Set record time period in min(max is 65535 minutes)	
Test Command: AT+ RTP=?	Response: 5 OK
Test Command: AT+ RTP?	Response: Get or Set record time period in min OK
Test Command: AT+ RTP=60	Response: OK